

**Austin-Bergstrom International Airport  
Aviation Activity Report  
Calendar Year 2020 vs 2019**

**Combined Terminals**

	8/2020	8/2019	Percent Change	1/2020 - 8/2020	1/2019 - 8/2019	Percent Change
<b>ABIA</b>						
<b>Total Passenger Activity</b>						
Domestic Enplaned Revenue	188,611	649,720	-70.97%	2,039,822	5,070,658	-59.77%
Domestic Deplaned Revenue	194,514	675,367	-71.20%	2,051,883	5,065,455	-59.49%
International Enplaned Revenue	295	20,567	-98.57%	32,294	149,420	-78.39%
International Deplaned Revenue	413	23,280	-98.23%	35,271	154,368	-77.15%
Domestic Enplaned Non-Revenue	7,906	14,607	-45.88%	68,676	114,197	-39.86%
Domestic Deplaned Non-Revenue	7,517	13,528	-44.43%	64,238	109,502	-41.34%
International Enplaned Non-Revenue	2	180	-98.89%	495	1,137	-56.46%
International Deplaned Non-Revenue	5	152	-96.71%	428	1,018	-57.96%
Intl Enplaned Pre-Cleared Revenue	0	4,336	-100.00%	5,483	27,947	-80.38%
Intl Deplaned Pre-Cleared Revenue	0	4,580	-100.00%	4,626	27,533	-83.20%
Intl Enplaned Pre-Cleared Non-Revenue	0	58	-100.00%	108	329	-67.17%
Intl Deplaned Pre-Cleared Non-Revenue	0	71	-100.00%	100	351	-71.51%
South Terminal Domestic Enplaned Revenue	9,526	55,917	-82.96%	107,440	354,371	-69.68%
South Terminal Domestic Deplaned Revenue	10,601	58,981	-82.03%	110,426	355,608	-68.95%
South Terminal Domestic Enplaned Non-Revenue	39	166	-76.51%	522	1,146	-54.45%
South Terminal Domestic Deplaned Non-Revenue	46	236	-80.51%	510	1,453	-64.90%
<b>ABIA Passenger Totals</b>	<b>419,475</b>	<b>1,521,746</b>	<b>-72.43</b>	<b>4,522,322</b>	<b>11,434,493</b>	<b>-60.45</b>
<i>ABIA Enplaned Passenger Totals</i>	<i>206,379</i>	<i>745,551</i>	<i>-72.32</i>	<i>2,254,840</i>	<i>5,719,205</i>	<i>-60.57</i>
<i>ABIA Deplaned Passenger Totals</i>	<i>213,096</i>	<i>776,195</i>	<i>-72.55</i>	<i>2,267,482</i>	<i>5,715,288</i>	<i>-60.33</i>
<i>ABIA Domestic Passenger Totals</i>	<i>418,760</i>	<i>1,468,522</i>	<i>-71.48</i>	<i>4,443,517</i>	<i>11,072,390</i>	<i>-59.87</i>
<i>ABIA International Passenger Totals</i>	<i>715</i>	<i>53,224</i>	<i>-98.66</i>	<i>78,805</i>	<i>362,103</i>	<i>-78.24</i>

**CURRENT PASSENGER RECORD = 1,643,016 RECORD SET = JULY 2019**

**Total Aircraft Operations**

Air Carrier	6,550	12,579	-47.93%	55,859	93,927	-40.53%
Commuter & Air Taxi	1,231	1,110	10.90%	8,308	10,349	-19.72%
Military	534	649	-17.72%	3,244	6,227	-47.90%
General Aviation						
Itinerant	3,221	3,413	-5.63%	21,558	27,299	-21.03%
Local	0	0	0.00%	268	508	-47.24%
<b>Total G.A.</b>	<b>3,221</b>	<b>3,413</b>	<b>-5.63</b>	<b>21,826</b>	<b>27,807</b>	<b>-21.51</b>
<b>Total Operations</b>	<b>11,536</b>	<b>17,751</b>	<b>-35.01</b>	<b>89,237</b>	<b>138,310</b>	<b>-35.48</b>

**Austin-Bergstrom International Airport  
Aviation Activity Report  
Calendar Year 2020 vs 2019**

**By Terminal**

	8/2020	8/2019	Percent Change	1/2020 - 8/2020	1/2019 - 8/2019	Percent Change
<b><u>Barbara Jordan Terminal (BJT)</u></b>						
<b>Passenger Activity</b>						
Domestic Enplaned Revenue	188,611	649,720	-70.97%	2,039,822	5,070,658	-59.77%
Domestic Deplaned Revenue	194,514	675,367	-71.20%	2,051,883	5,065,455	-59.49%
International Enplaned Revenue	295	20,567	-98.57%	32,294	149,420	-78.39%
International Deplaned Revenue	413	23,280	-98.23%	35,271	154,368	-77.15%
Domestic Enplaned Non-Revenue	7,906	14,607	-45.88%	68,676	114,197	-39.86%
Domestic Deplaned Non-Revenue	7,517	13,528	-44.43%	64,238	109,502	-41.34%
International Enplaned Non-Revenue	2	180	-98.57%	495	1,137	-56.46%
International Deplaned Non-Revenue	5	152	-96.71%	428	1,018	-57.96%
Intl Enplaned Pre-Cleared Revenue	0	4,336	-100.00%	5,483	27,947	-80.38%
Intl Deplaned Pre-Cleared Revenue	0	4,580	-100.00%	4,626	27,533	-83.20%
Intl Enplaned Pre-Cleared Non-Revenue	0	58	-100.00%	108	329	-67.17%
Intl Deplaned Pre-Cleared Non-Revenue	0	71	-100.00%	100	351	-71.51%
<b>Barbara Jordan Terminal Passenger Totals</b>	<b>399,263</b>	<b>1,406,446</b>	<b>-71.61</b>	<b>4,303,424</b>	<b>10,721,915</b>	<b>-59.86</b>
<i>BJT Enplaned Passenger Totals</i>	<i>196,814</i>	<i>689,468</i>	<i>-71.45</i>	<i>2,146,878</i>	<i>5,363,688</i>	<i>-59.97</i>
<i>BJT Deplaned Passenger Totals</i>	<i>202,449</i>	<i>716,978</i>	<i>-71.76</i>	<i>2,156,546</i>	<i>5,358,227</i>	<i>-59.75</i>
<i>BJT Domestic Passenger Totals</i>	<i>398,548</i>	<i>1,353,222</i>	<i>-70.55</i>	<i>4,224,619</i>	<i>10,359,812</i>	<i>-59.22</i>
<i>BJT International Passenger Totals</i>	<i>715</i>	<i>53,224</i>	<i>-98.66</i>	<i>78,805</i>	<i>362,103</i>	<i>-78.24</i>
<b><u>South Terminal (ST)</u></b>						
<b>Passenger Activity</b>						
South Terminal Domestic Enplaned Revenue	9,526	55,917	-82.96%	107,440	354,371	-69.68%
South Terminal Domestic Deplaned Revenue	10,601	58,981	-82.03%	110,426	355,608	-68.95%
South Terminal Domestic Enplaned Non-Revenue	39	166	-76.51%	522	1,146	-54.45%
South Terminal Domestic Deplaned Non-Revenue	46	236	-80.51%	510	1,453	-64.90%
<b>South Terminal Passenger Totals</b>	<b>20,212</b>	<b>115,300</b>	<b>-82.47</b>	<b>218,898</b>	<b>712,578</b>	<b>-69.28</b>
<i>ST Enplaned Passenger Totals</i>	<i>9,565</i>	<i>56,083</i>	<i>-82.94</i>	<i>107,962</i>	<i>355,517</i>	<i>-69.63</i>
<i>ST Deplaned Passenger Totals</i>	<i>10,647</i>	<i>59,217</i>	<i>-82.02</i>	<i>110,936</i>	<i>357,061</i>	<i>-68.93</i>

**Austin-Bergstrom International Airport  
Aviation Activity Report  
Calendar Year 2020 vs 2019**

	8/2020	8/2019	Percent Change	1/2020 - 8/2020	1/2019 - 8/2019	Percent Change
<b><u>Total Cargo Activity</u></b>						
<b>Mail</b>						
Domestic Enplaned Mail	198,495	120,937	64.13%	1,382,608	1,492,378	-7.36%
Domestic Deplaned Mail	443,836	638,852	-30.53%	3,469,201	5,256,438	-34.00%
International Enplaned Mail	0	0	0.00%	0	0	0.00%
International Deplaned Mail	0	0	0.00%	0	110,830	-100.00%
South Terminal-Domestic Enplaned Mail	0	0	0.00%	0	0	0.00%
South Terminal-Domestic Deplaned Mail	0	0	0.00%	0	0	0.00%
<b>Mail Totals</b>	<b>642,331</b>	<b>759,789</b>	<b>-15.46</b>	<b>4,851,809</b>	<b>6,859,646</b>	<b>-29.27</b>
<b>Cargo</b>						
Domestic Enplaned Cargo	9,673,893	4,941,533	95.77%	47,880,245	38,567,339	24.15%
Domestic Deplaned Cargo	9,062,363	6,918,006	31.00%	66,499,227	52,803,183	25.94%
International Enplaned Cargo	27,957	382,717	-92.70%	1,067,598	3,035,150	-64.83%
International Deplaned Cargo	6,694	233,455	-97.13%	525,445	2,327,388	-77.42%
South Terminal-Domestic Enplaned Cargo	0	0	0.00%	0	0	0.00%
South Terminal-Domestic Deplaned Cargo	0	0	0.00%	0	0	0.00%
<b>Cargo Totals</b>	<b>18,770,907</b>	<b>12,475,711</b>	<b>50.46</b>	<b>115,972,515</b>	<b>96,733,060</b>	<b>19.89</b>
<b>Belly Freight</b>						
Domestic Enplaned Belly Freight	212,057	287,022	-26.12%	1,899,182	2,580,264	-26.40%
Domestic Deplaned Belly Freight	316,804	451,921	-29.90%	2,888,784	4,251,162	-32.05%
International Enplaned Belly Freight	0	318,493	-100.00%	1,035,039	2,588,551	-60.01%
International Deplaned Belly Freight	0	514,641	-100.00%	2,056,175	4,951,226	-58.47%
South Terminal-Domestic Enplaned Belly Frght	0	0	0.00%	0	0	0.00%
South Terminal-Domestic Deplaned Belly Frght	0	0	0.00%	0	0	0.00%
<b>Belly Freight Totals</b>	<b>528,861</b>	<b>1,572,077</b>	<b>-66.36</b>	<b>7,879,180</b>	<b>14,371,203</b>	<b>-45.17</b>
<b>Cargo Totals (Mail, Cargo, Belly Freight)</b>	<b>19,942,099</b>	<b>14,807,577</b>	<b>34.67</b>	<b>128,703,504</b>	<b>117,963,909</b>	<b>9.10</b>
<i>Enplaned Cargo Totals</i>	<i>10,112,402</i>	<i>6,050,702</i>	<i>67.13</i>	<i>53,264,672</i>	<i>48,263,682</i>	<i>10.36</i>
<i>Deplaned Cargo Totals</i>	<i>9,829,697</i>	<i>8,756,875</i>	<i>12.25</i>	<i>75,438,832</i>	<i>69,700,227</i>	<i>8.23</i>
<i>Domestic Cargo Totals</i>	<i>19,907,448</i>	<i>13,358,271</i>	<i>49.03</i>	<i>124,019,247</i>	<i>104,950,764</i>	<i>18.17</i>
<i>International Cargo Totals</i>	<i>34,651</i>	<i>1,449,306</i>	<i>-97.61</i>	<i>4,684,257</i>	<i>13,013,145</i>	<i>-64.00</i>

CURRENT CARGO RECORD = 40,215,518

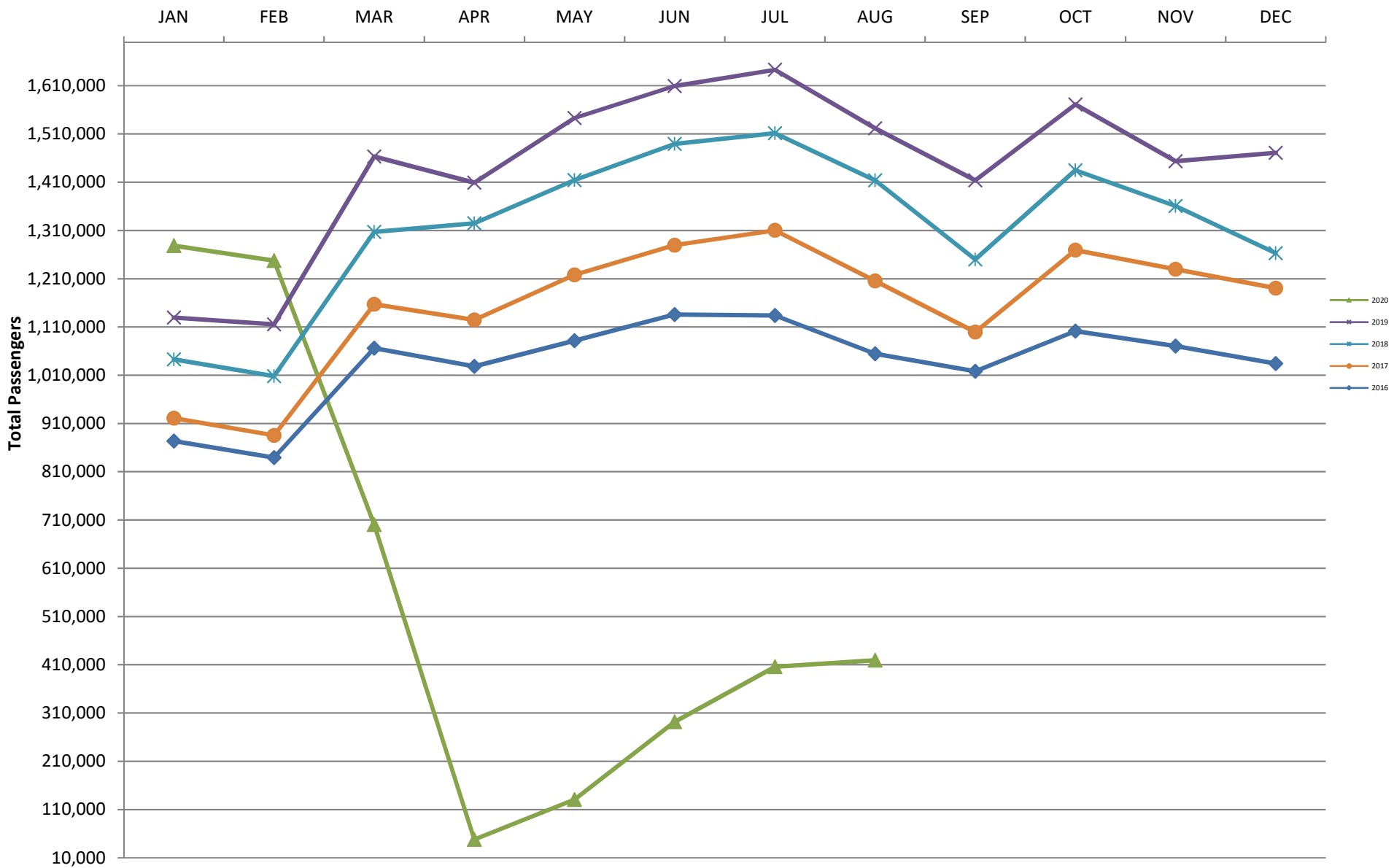
RECORD SET = MARCH 2001

**AUS – Airline Codes**  
August 2020

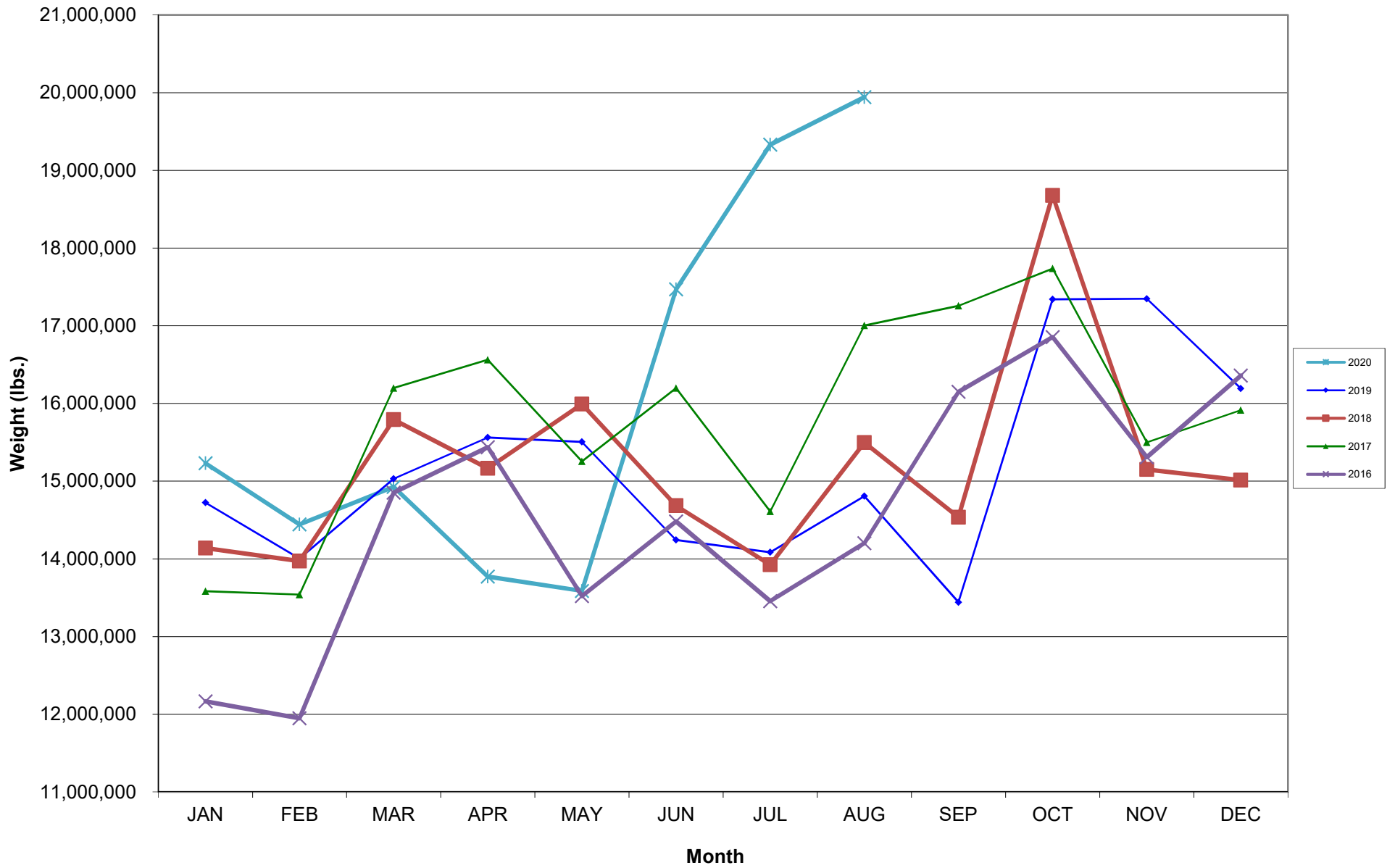
<b><u>Code</u></b>	<b><u>Carrier</u></b>
AS	Alaska Airlines, Inc.
G4	Allegiant Air, LLC
AA	American Airlines, Inc.
DL	Delta Air Lines
F9	Frontier Airlines, Inc.
B6	JetBlue Airways Corp.
WN	Southwest Airlines
NK	Spirit Airlines, Inc.
SY	Sun Country Airlines/MN Airlines LLC
UA	United Airlines, Inc.

# AUSTIN PASSENGER TRAFFIC

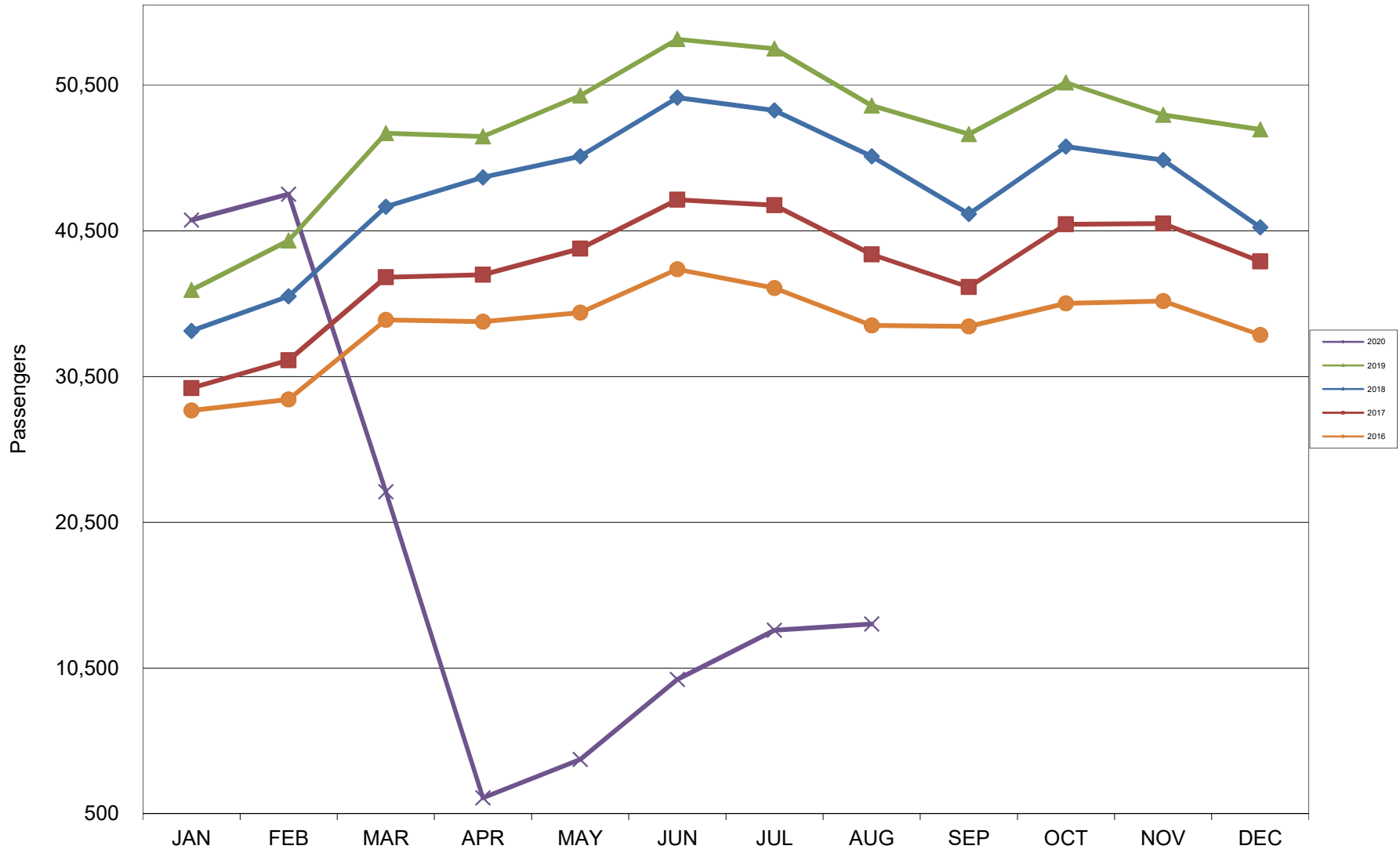
## 5 Year Trend



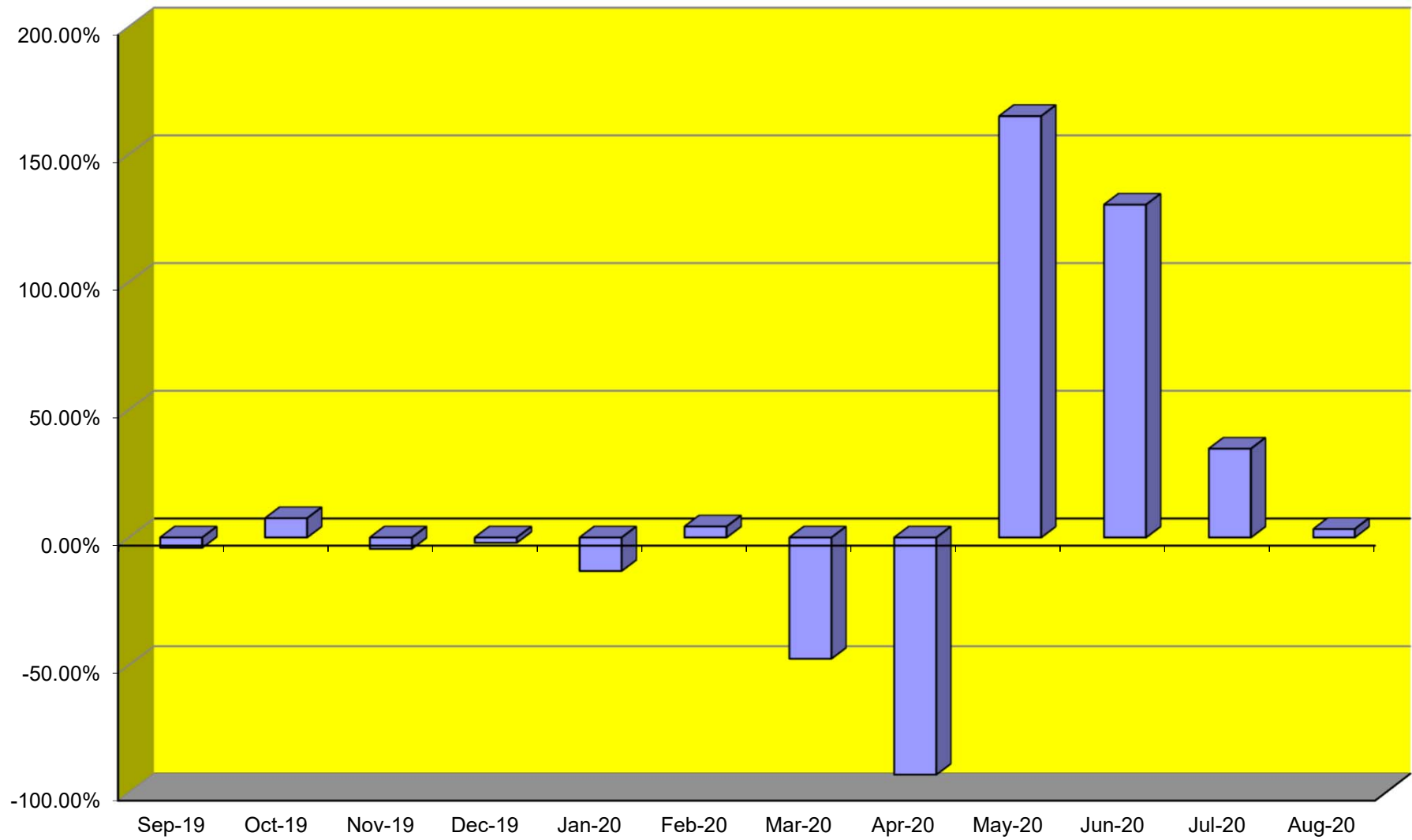
# TOTAL CARGO POUNDAGE - AUSTIN, TEXAS



### Average Daily Passengers

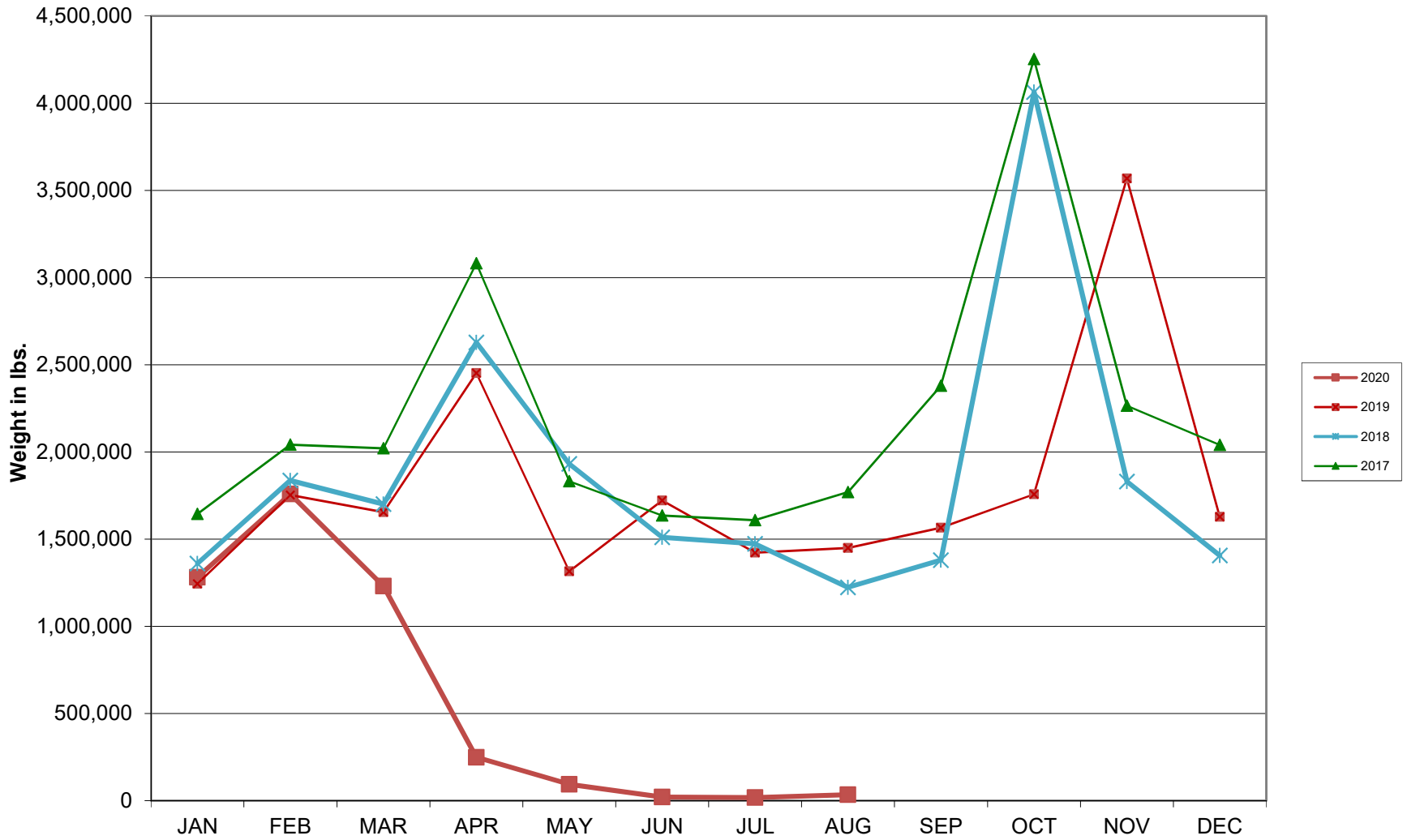


**Monthly % Change in Average Daily Passengers**

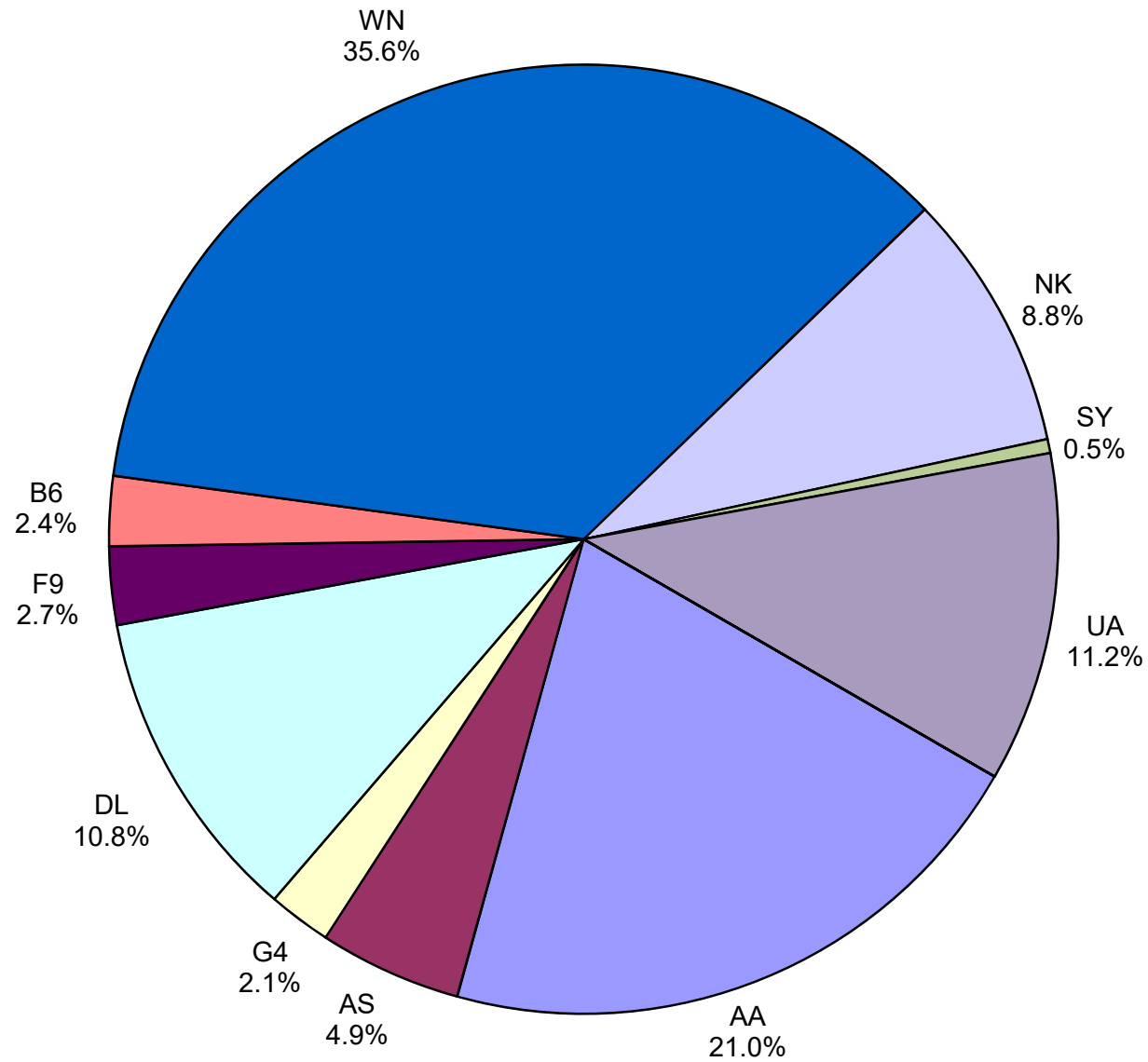




# HISTORY OF INTERNATIONAL AIR CARGO



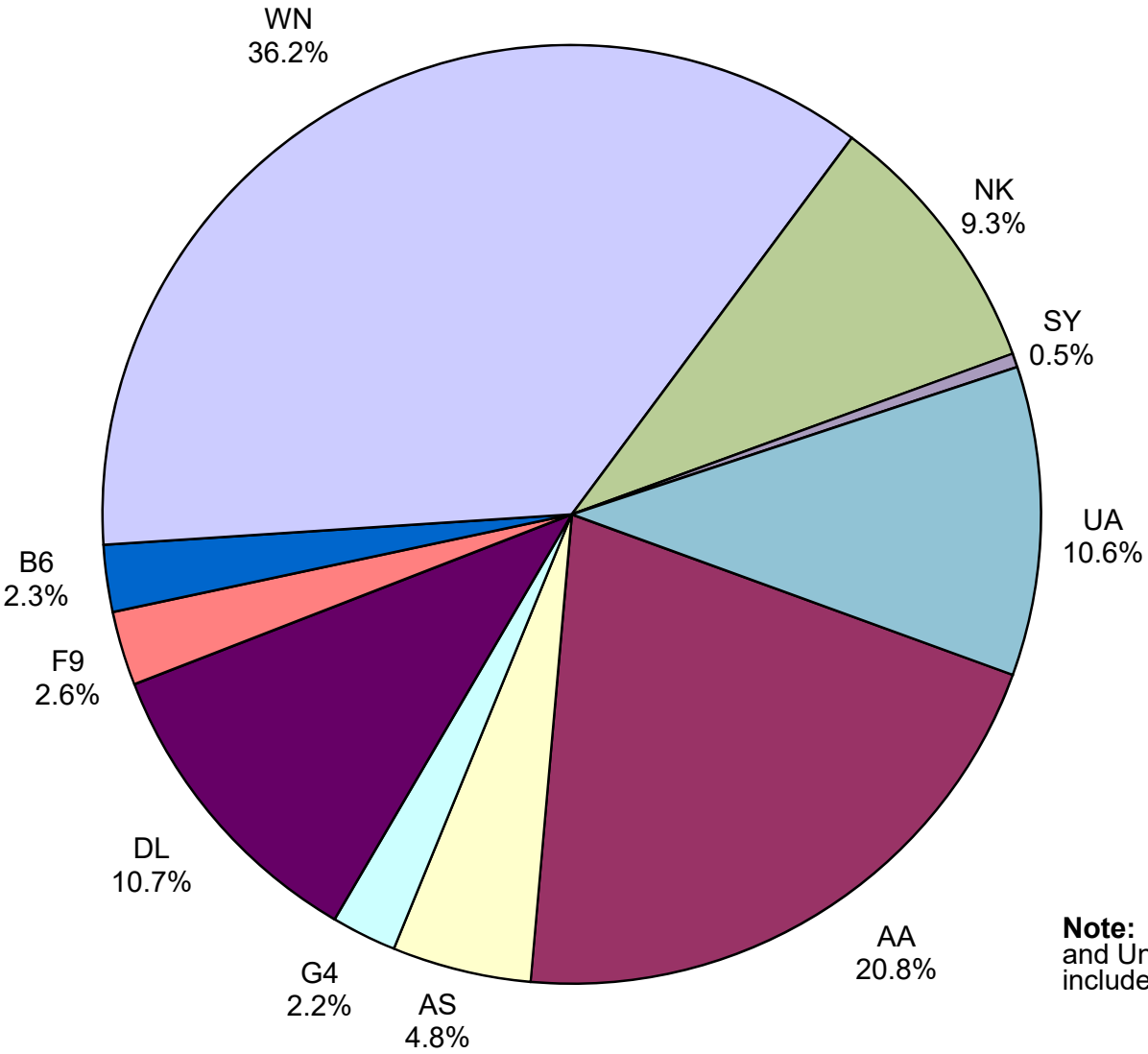
# Total Passengers August 2020



**Other:**

**Note:** American, Delta and United Airlines percentages include Affiliates.

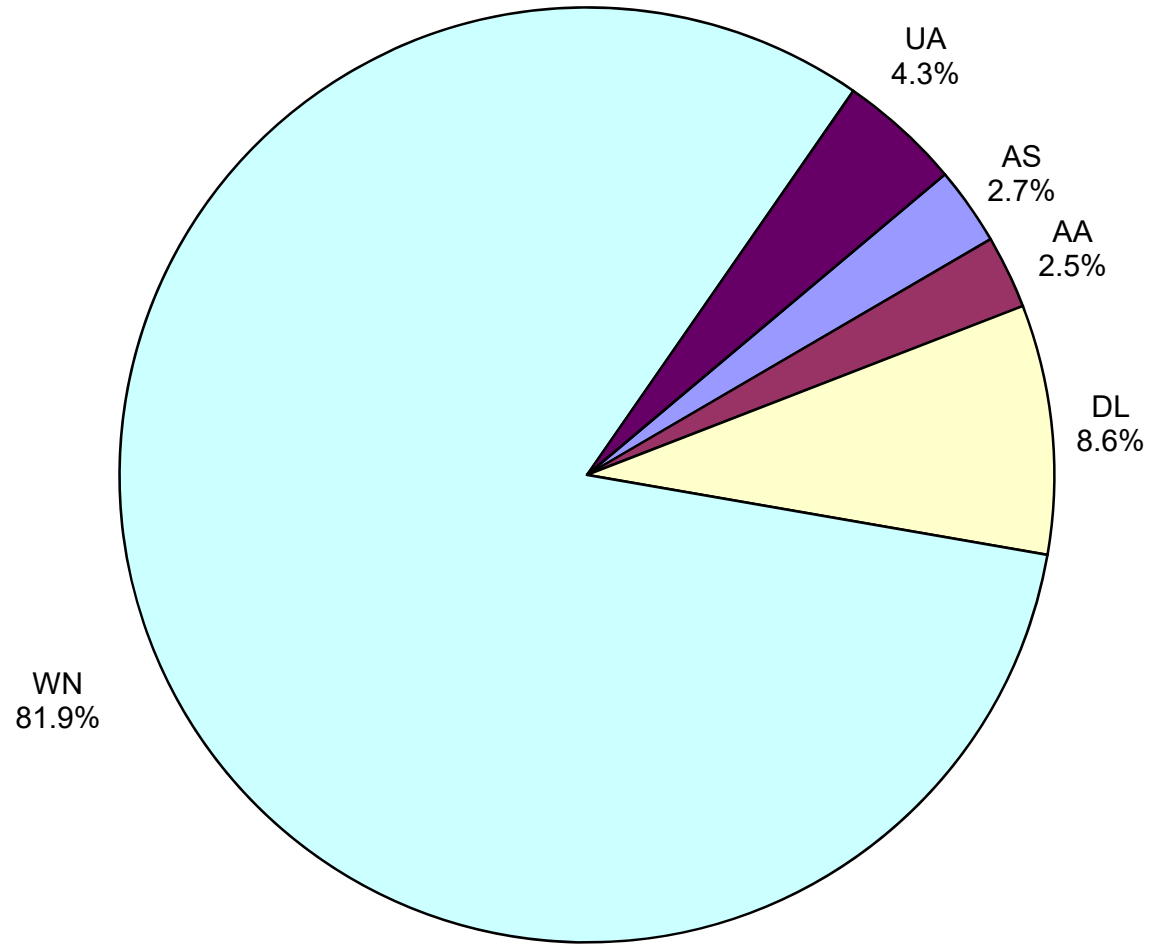
**All Passenger Carriers  
Enplaned Revenue Passengers  
August 2020**



**Other:**

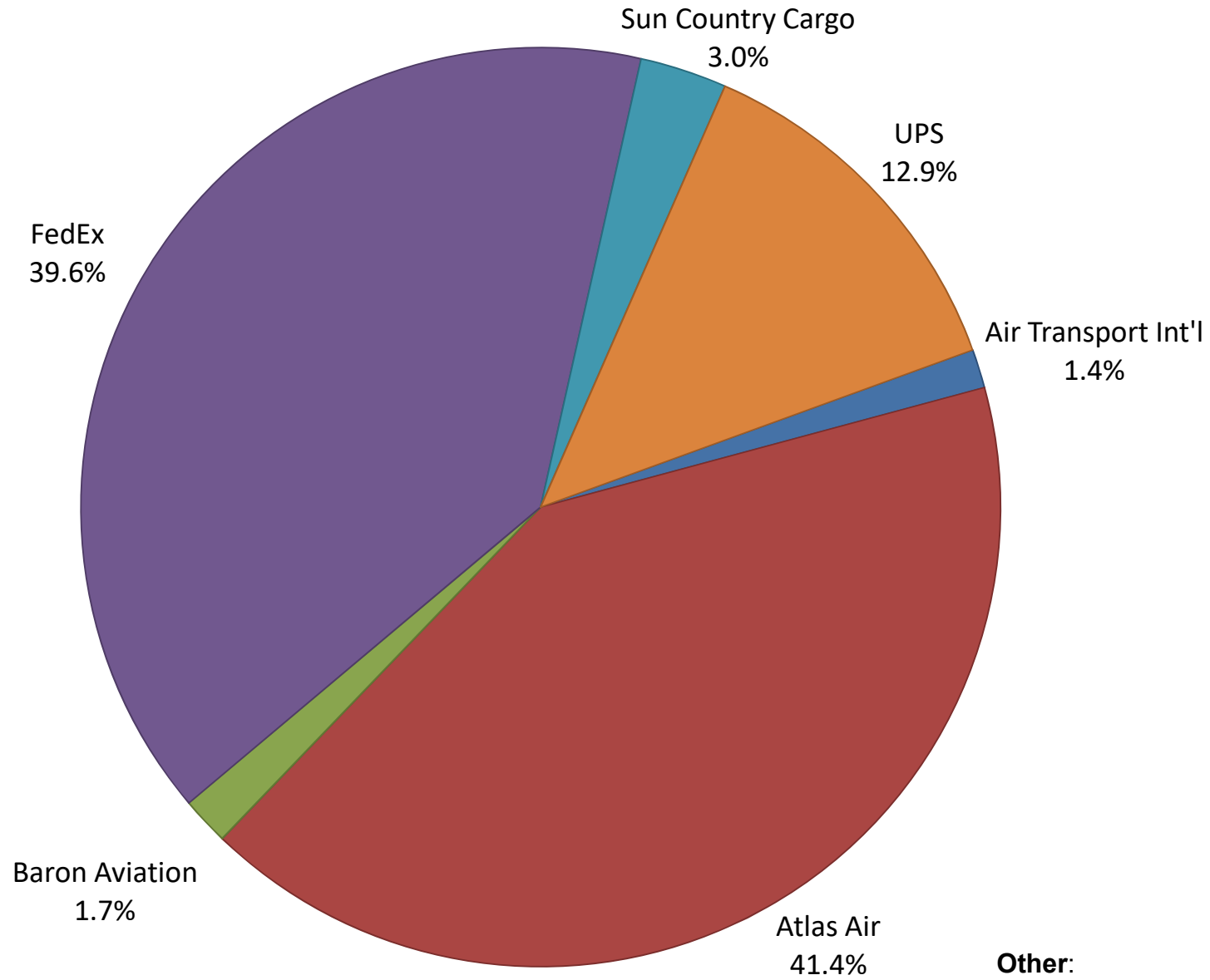
**Note:** American/US Airways, Delta and United Airlines percentages include Affiliates.

**AUS Belly Freight Market Shares  
August 2020**

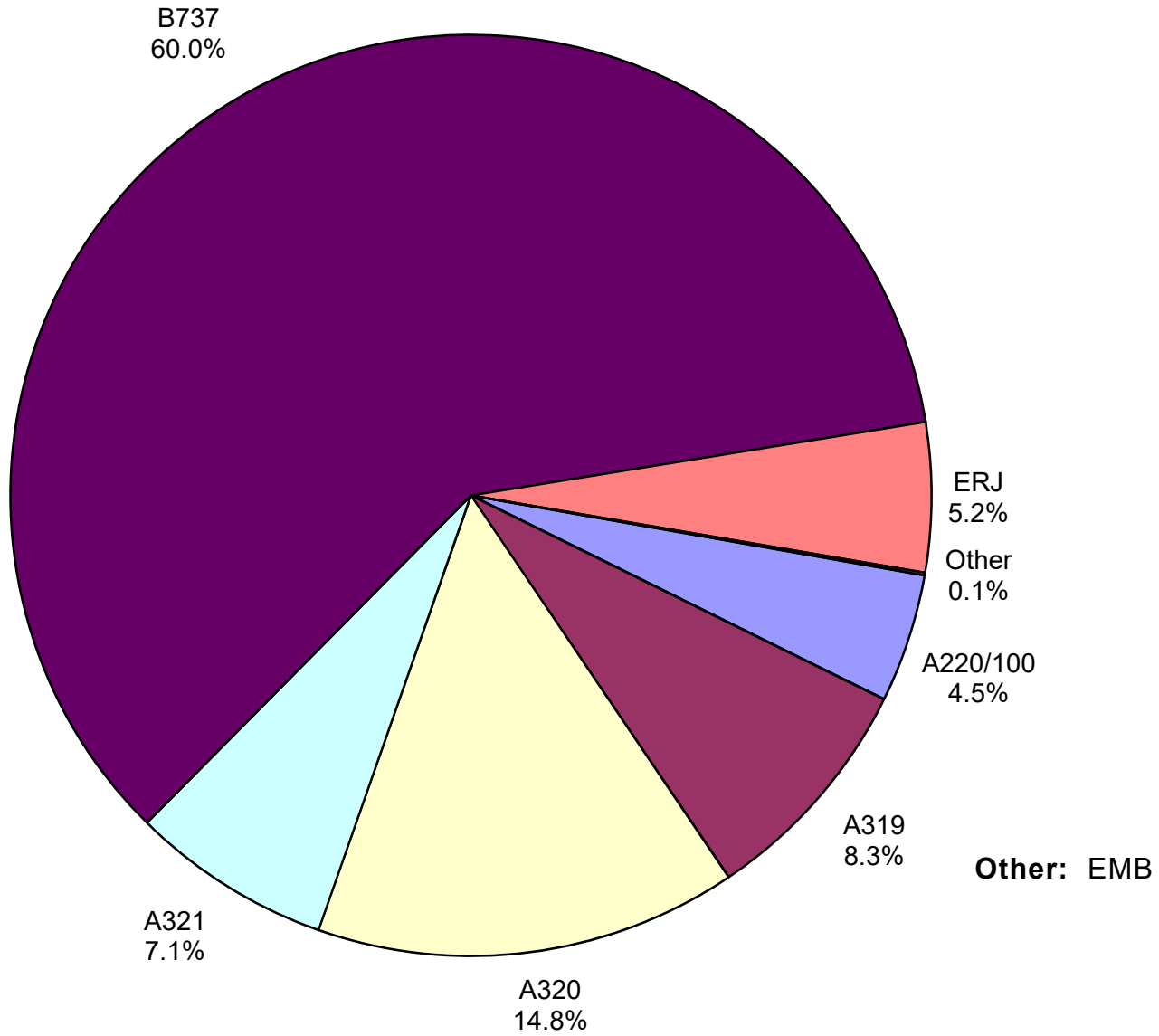


**Other =**

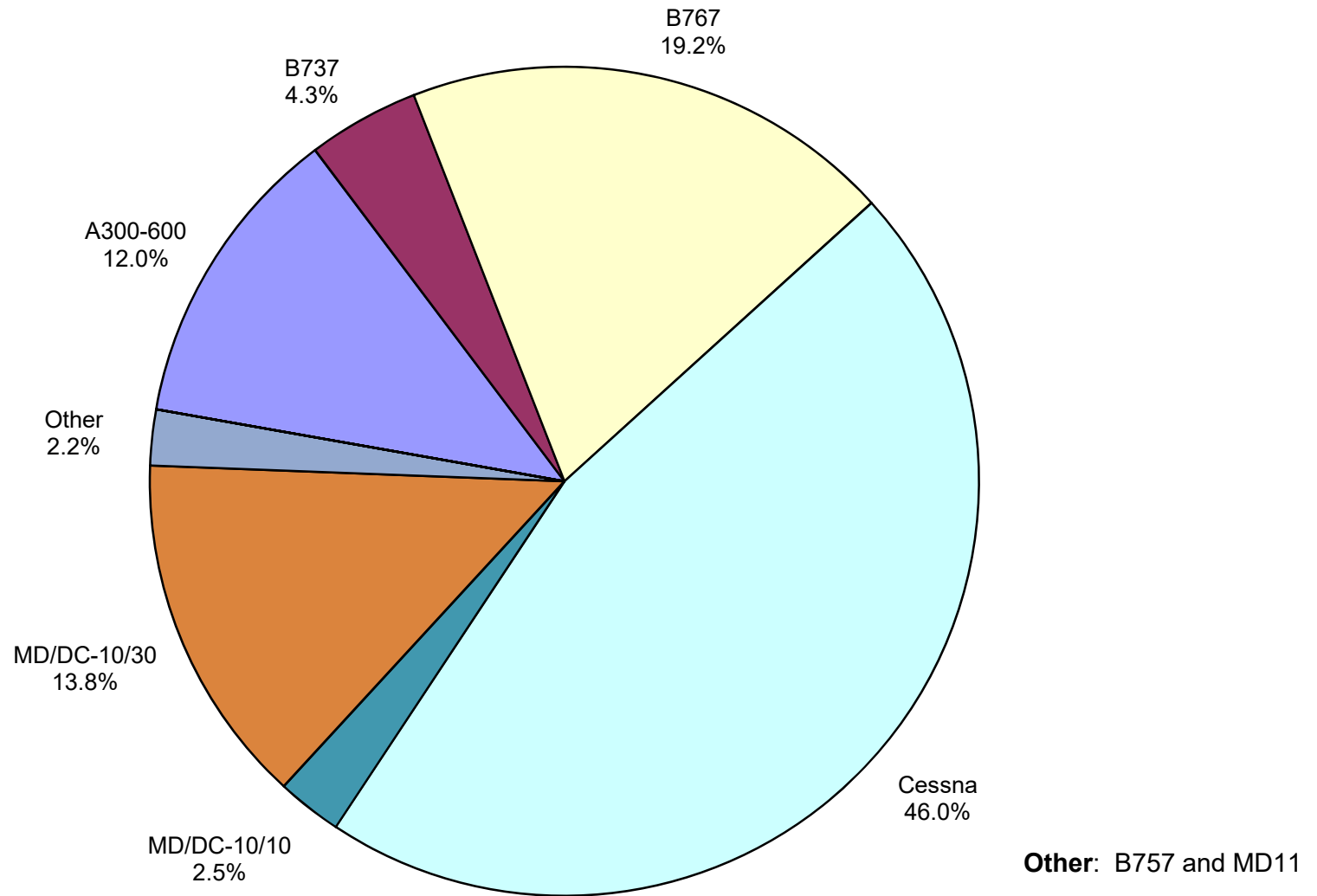
# Air Cargo Market Share August 2020



**AUS Scheduled Passenger Aircraft Fleet Mix  
August 2020**



**AUS Scheduled Cargo Aircraft Fleet Mix  
August 2020**



# Austin-Bergstrom International Airport

## Pax Detail Report - August, 2020

Company	Period				YTD				2020 Share	2019 Share	Share Diff
	8/2020	8/2019	Difference	Change	YTD 2020	YTD 2019	Difference	Change			
Aeroenlaces Nacionales, SA DE CV	0	0	0	0.0	197	0	197	0.0	0.0	0.0	0.0
Aerovias de Mexico S.A. de C.V. (DIP)	0	0	0	0.0	378	0	378	0.0	0.0	0.0	0.0
Aerovias de Mexico S.A. de C.V. Pre Bankruptcy	0	4,976	-4,976	-100.0	9,915	30,109	-20,194	-67.1	0.2	0.3	-0.1
Air Canada	0	6,756	-6,756	-100.0	10,317	47,667	-37,350	-78.4	0.2	0.4	-0.2
Air New Zealand Limited	0	0	0	0.0	0	302	-302	-100.0	0.0	0.0	0.0
Alaska Airlines INC	20,359	53,716	-33,357	-62.1	181,532	407,958	-226,426	-55.5	4.0	3.6	0.4
Allegiant Air LLC	9,029	13,378	-4,349	-32.5	63,012	145,353	-82,341	-56.6	1.4	1.3	0.1
American Airlines INC	87,942	267,554	-179,612	-67.1	913,004	2,031,964	-1,118,960	-55.1	20.2	17.8	2.4
British Airways PLC	0	17,811	-17,811	-100.0	29,217	127,789	-98,572	-77.1	0.6	1.1	-0.5
Concesionaria Vuela Compañía de Aviación, S.A.P.I.	0	0	0	0.0	0	434	-434	-100.0	0.0	0.0	0.0
Delta Air Lines	45,264	219,955	-174,691	-79.4	575,740	1,562,617	-986,877	-63.2	12.7	13.7	-1.0
Deutsche Lufthansa AG	0	8,066	-8,066	-100.0	15,883	34,266	-18,383	-53.6	0.4	0.3	0.1
Frontier Airlines INC	11,183	101,922	-90,739	-89.0	155,886	564,007	-408,121	-72.4	3.4	4.9	-1.5
JetBlue Airways Corporation	9,987	45,759	-35,772	-78.2	141,912	377,092	-235,180	-62.4	3.1	3.3	-0.2
Miami Air International INC Pre Bankruptcy	0	0	0	0.0	121	869	-748	-86.1	0.0	0.0	0.0
Norwegian Air UK LTD	0	8,666	-8,666	-100.0	3,474	48,150	-44,676	-92.8	0.1	0.4	-0.3
Scandinavian Airlines	0	0	0	0.0	0	423	-423	-100.0	0.0	0.0	0.0
Southwest Airlines	149,457	483,943	-334,486	-69.1	1,522,783	3,897,630	-2,374,847	-60.9	33.7	34.1	-0.4
Spirit Airlines Inc	37,080	73,908	-36,828	-49.8	315,823	471,974	-156,151	-33.1	7.0	4.1	2.9
Sun Country Airlines/MN Airlines LLC	1,998	8,017	-6,019	-75.1	6,397	25,689	-19,292	-75.1	0.1	0.2	-0.1
Swift Air LLC	0	0	0	0.0	928	1,557	-629	-40.4	0.0	0.0	0.0
United Airlines INC	47,176	205,030	-157,854	-77.0	575,803	1,645,182	-1,069,379	-65.0	12.7	14.4	-1.7
Vacation Express	0	0	0	0.0	0	1,750	-1,750	-100.0	0.0	0.0	0.0
VIA Airlines, INC	0	0	0	0.0	0	3,218	-3,218	-100.0	0.0	0.0	0.0
WestJet	0	2,289	-2,289	-100.0	0	8,493	-8,493	-100.0	0.0	0.1	-0.1
<b>Report Totals</b>	<b>419,475</b>	<b>1,521,746</b>	<b>-1,102,271</b>	<b>-72.4%</b>	<b>4,522,322</b>	<b>11,434,493</b>	<b>-6,912,171</b>	<b>-60.5%</b>	<b>99.8%</b>	<b>100.0%</b>	

### Statistics Included in Report

Domestic Passengers: Enplaned Revenue, Deplaned Revenue, Enplaned Non-Revenue, Deplaned Non-Revenue  
International Passengers: Enplaned Revenue, Deplaned Revenue, Enplaned Non-Revenue, Deplaned Non-Revenue  
International Pre-Cleared Passengers: Enplaned Revenue, Deplaned Revenue, Enplaned Non-Revenue, Deplaned Non-Revenue  
South Terminal Domestic Passengers: Enplaned Revenue, Deplaned Revenue, Enplaned Non-Revenue, Deplaned Non-Revenue



# Austin-Bergstrom International Airport

## Summary Landings Report

**Landing Type: Total**

Month	2020		2019		2018		% Change 2020- 2019		% Change 2019- 2018	
	Count	Weight	Count	Weight	Count	Weight	Count	Weight	Count	Weight
January	5,762	812,175,948	5,348	733,746,679	5,086	688,923,110	7.74%	10.69%	5.15%	6.51%
February	5,382	764,833,023	5,040	692,708,930	4,706	637,500,756	6.79%	10.41%	7.10%	8.66%
March	5,278	742,099,772	5,964	825,483,911	5,643	760,648,260	-11.50%	-10.10%	5.69%	8.52%
April	1,884	264,508,162	5,899	815,621,798	5,797	793,367,736	-68.06%	-67.57%	1.76%	2.81%
May	1,608	223,266,578	6,294	881,747,150	6,117	831,431,763	-74.45%	-74.68%	2.89%	6.05%
June	2,119	293,669,395	6,322	890,410,020	6,211	852,438,818	-66.48%	-67.02%	1.79%	4.45%
July	3,401	458,639,882	6,551	915,103,306	6,346	869,502,671	-48.08%	-49.88%	3.23%	5.24%
August	3,390	473,872,571	6,447	906,499,773	6,245	861,046,997	-47.42%	-47.73%	3.23%	5.28%
September	0	0	6,020	848,899,951	5,737	790,731,351	-100.00%	-100.00%	4.93%	7.36%
October	0	0	6,459	916,700,076	6,078	846,310,860	-100.00%	-100.00%	6.27%	8.32%
November	0	0	5,924	836,527,780	5,684	780,994,101	-100.00%	-100.00%	4.22%	7.11%
December	0	0	6,078	848,973,148	5,600	761,317,385	-100.00%	-100.00%	8.54%	11.51%
<b>Totals For Selected Period</b>	28,824	4,033,065,331	47,865	6,661,321,567	46,151	6,294,860,111	-39.78%	-39.46%	3.71%	5.82%
<b>Yearly Totals</b>	28,824	4,033,065,331	72,346	10,112,422,522	69,250	9,474,213,808	-60.16%	-60.12%	4.47%	6.74%