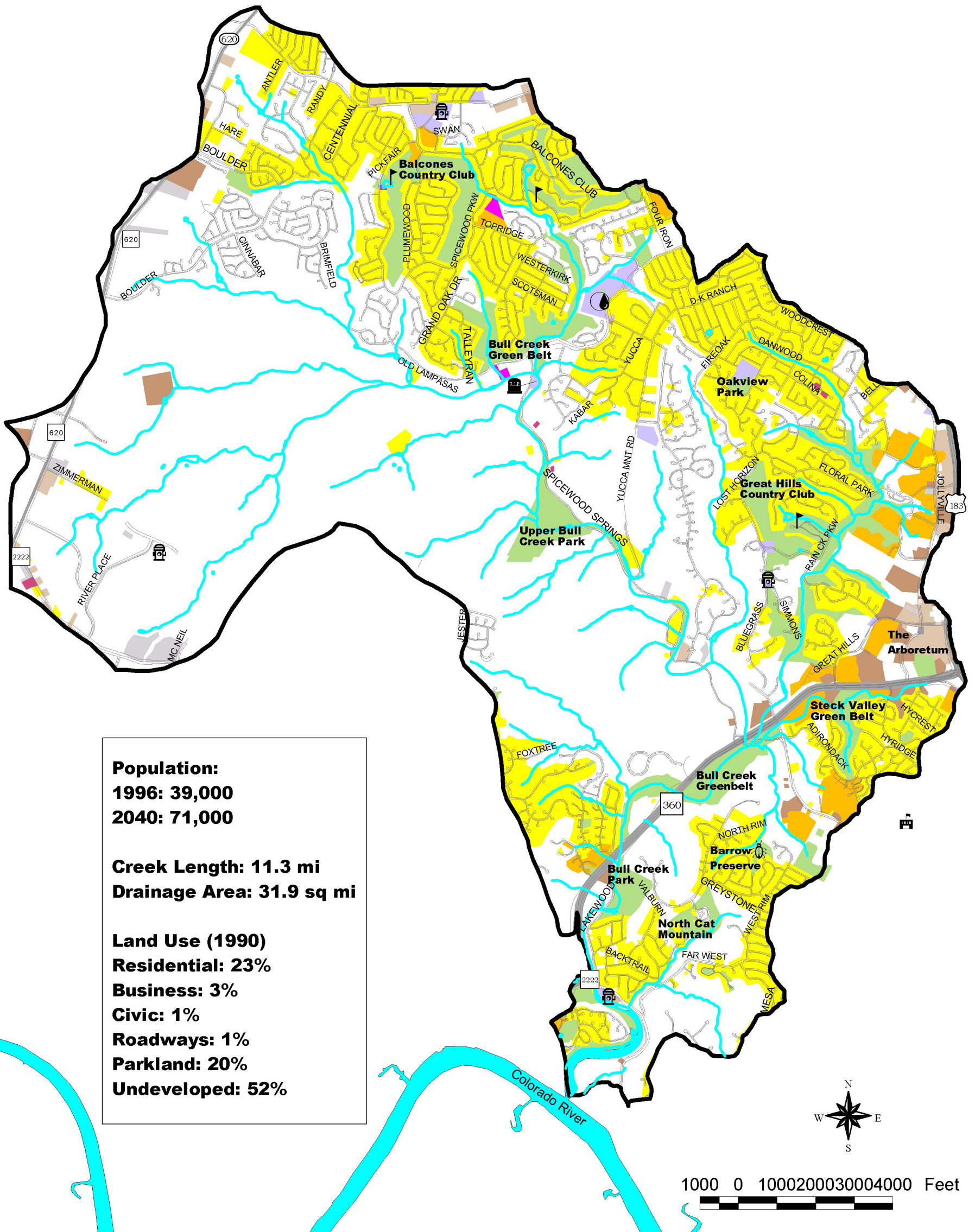


Bull Creek Watershed

1990 LAND USE



Population:
 1996: 39,000
 2040: 71,000

Creek Length: 11.3 mi
Drainage Area: 31.9 sq mi

Land Use (1990)
 Residential: 23%
 Business: 3%
 Civic: 1%
 Roadways: 1%
 Parkland: 20%
 Undeveloped: 52%

Watershed Boundary	Office	Utilities
Houses	Industry	Undeveloped
Mobile Homes	Schools & Community Centers	Water
Apartments	Parks	
Stores	Transportation	

Golf Course	Swimming Pool	Preserve	Cemetary	Fire Station	Anderson HS
-------------	---------------	----------	----------	--------------	-------------

