


Classic Design

Landscaping to protect and conserve Austin's water

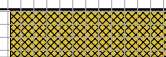
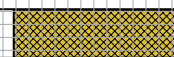
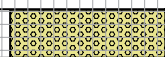
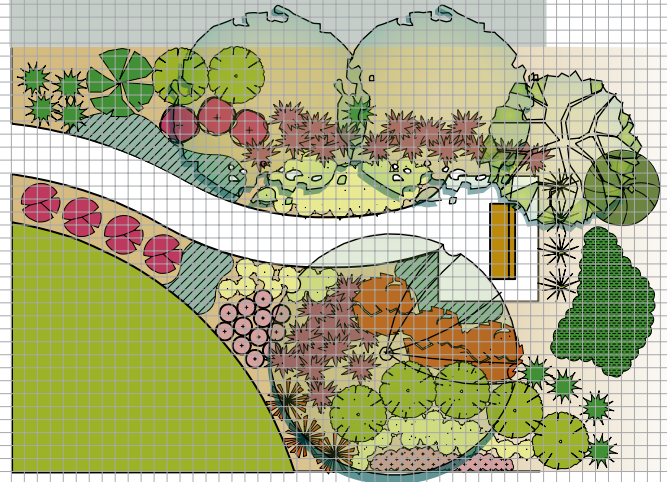
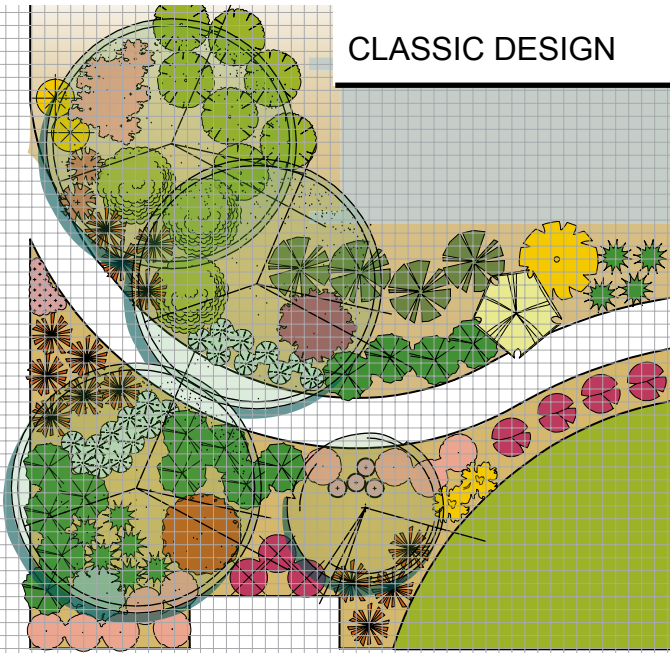
Demonstration garden located at: **Howson Library, 2500 Exposition Boulevard, Austin, Texas**





In 2004 the Howson Library landscape featured St. Augustine turf and just a few plants. The redesigned “green” landscape shows that a yard can be attractive and water conserving while still maintaining the feel of a traditional garden. The rainwater harvesting system which was added in 2009 is expected to provide an even greater reduction in water use.

CLASSIC DESIGN



plant key

trees

- wax myrtle
- anacacho orchid
- mountain laurel
- crape myrtle
- live oak

shrubs

- dwarf yaupon holly
- cenizo
- upright rosemary
- prostrate rosemary
- mutabilis rose
- patrick's abutilon

- flowering senna
- martha gonzales rose
- oleander
- agarita
- dwarf barbados cherry
- abelia

perennials

- zexmenia
- rock rose
- texas betony
- mountain pea
- purple coneflower
- bicolor iris

- mexican bush sage
- pink skullcap
- plumbago
- autumn sage
- bulbine
- gregg mistflower

- 'new gold' lantana
- purple heart
- dwarf variegated liriop
- giant liriop

cacti & succulents

- red yucca

groundcovers

- katie's dwarf ruellia
- leadwort plumbago
- leadwort plumbago, bulbine, blackfoot daisy
- liriop
- zoysiagrass
- leadwort plumbago, bulbine

Light:

South side: Sun (left or south side)

North side: Shade (right or north side)

Soil Needs:

- Amend existing soil with 2-3" of compost
- Be sure that your total soil base is 6-8" deep
- If additional soil is needed, use a good quality soil mix (approximately 25% compost, 65% loam and 10% sand)

Water Needs:

Once established:

- Zoysia Grass and Roses: Water thoroughly every 2-3 weeks if no rainfall
- Remaining Plants: Water thoroughly every 3-4 weeks if no rainfall

Irrigation:

- Hand-watering is recommended
- If you must use an irrigation system.. Choose one with bubblers and/or drip irrigation
- Putting irrigation in the median between the curb and sidewalk is not recommended in a home landscape. It is best to choose mulch or non-plant material to prevent irrigation over-spray

www.growgreen.org

Earth-Wise Gardening Tips:

- Plant the right plant in the right place based on sunlight required
- Mulch all beds to retain water and reduce weeds
- Use St. Augustine grass only in shaded areas
- Reduce turf to meet your aesthetic or family needs because grass generally requires more water and chemicals to maintain
- Use pervious pavement that allows water to soak into the ground and/or the surrounding landscape, such as stone without mortar, mulch or pervious concrete
- Use rainbarrels to capture and reuse rainwater



Howson Redesign Fast Facts:

Pre-2004 Landscape Redesign:

Water Usage:
37,000 gallons/month

Post-2004 Landscape Redesign:

Water Usage:
13,400 gallons/month



For a driving or biking map to this and other demonstration gardens or for more earth-wise gardening tips, visit www.growgreen.org

For water conserving tips and rebates, visit www.waterwiseaustin.org



512-974-2550

TEXAS A&M
AGRI LIFE
EXTENSION

512-854-9600



512-974-2199