

CENTRAL TEXAS FIRE ECOLOGY

2018 Grow Green Series

Michelle Bertelsen—Lady Bird Johnson Wildflower Center



































Reduce fuel loads

Disconnect canopy

Support healthy ecology

Be careful with soils

Thin in stages

Leave different aged trees and shrubs

Encourage diversity

Lessons from wildland fire

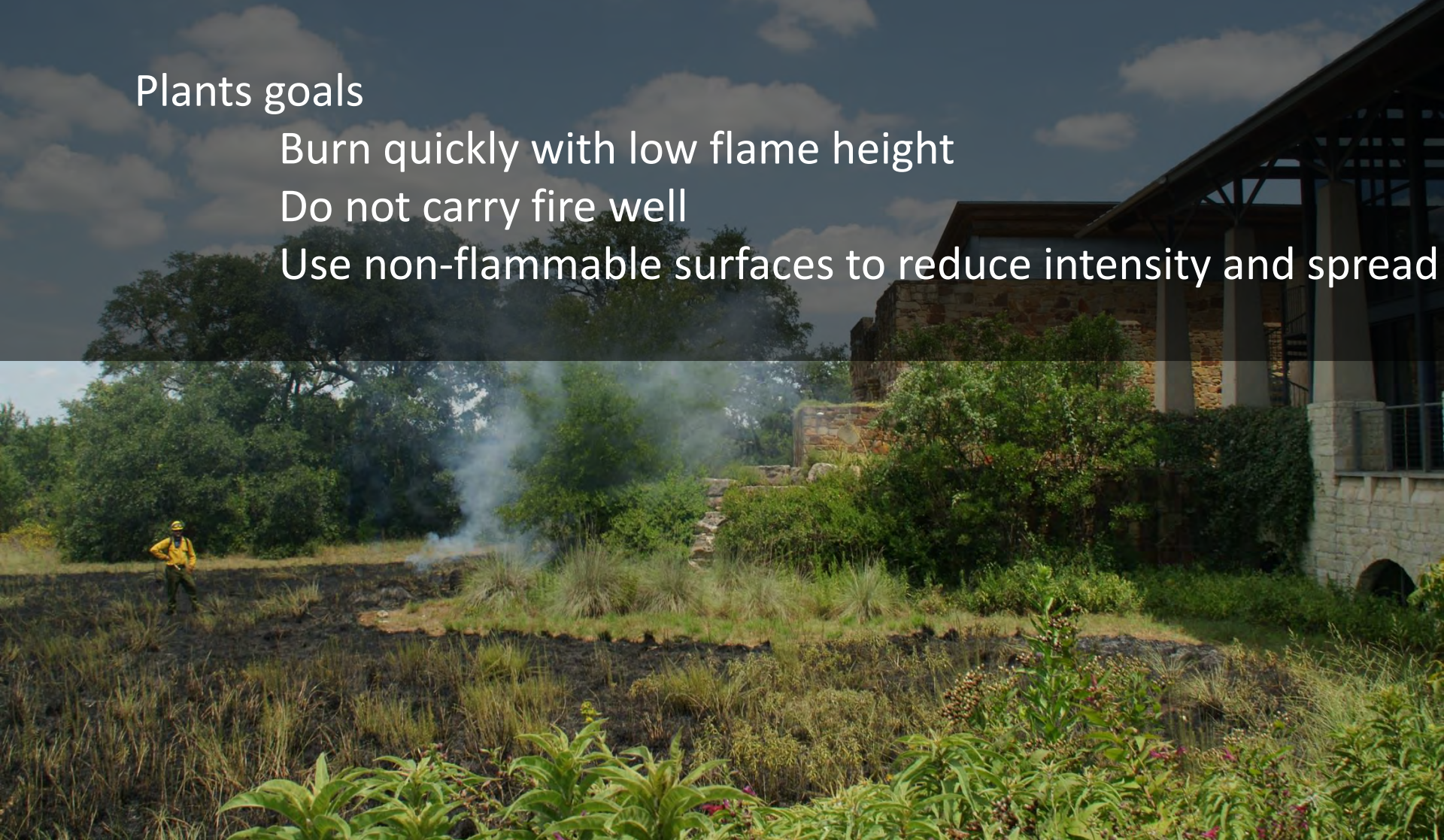
Zone 1 and 2—reduce flame height, residence time and intensity

Plants goals

- Burn quickly with low flame height

- Do not carry fire well

- Use non-flammable surfaces to reduce intensity and spread















Broomweed *Amphiachyris drunculoides*

Blazing star *Liatris* spp.

Neither carry fire well

Share open, herbaceous or thin woody structure



Columbine *Aquilegia* spp.

Open structure, burns quickly

Needs to be kept moist



Four nerved daisy *Tetraneuris linearifolia*

Small, open structure

Prefers drier conditions

can be placed in rocky, gravelly
matrix



Winecup *Callirhoe involucrata*

Short, open structure

Moderate drought tolerance























