



# Field Guide



Blue-eyed Grass



Texas Bluebonnet



Southern Iris



Gregg's Mistflower



Lyre-Leaf Sage



Dayflower



Baby Blue Eyes



Buffalo Bur



Goldenrod



Agarita



Texas Dandelion  
(Rock Lettuce)



Senna



Maximillian Sunflower



Slender Green Thread



Indian Mallow



Coreopsis



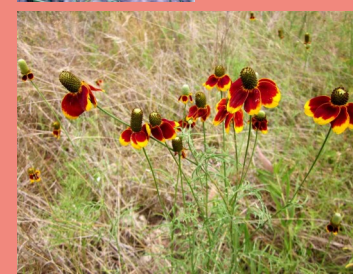
Prickly Sow Thistle



Rattlebush



Broomweed



Mexican Hat



Indian Blanket



Prickly Pear Cactus



Autumn Sage



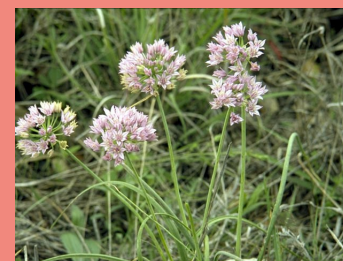
Indian Paintbrush



Turk's Cap



Rock Rose



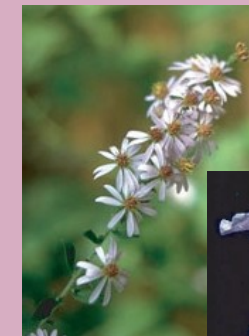
Wild Onion



West Indian Lantana



Sensitive Brier



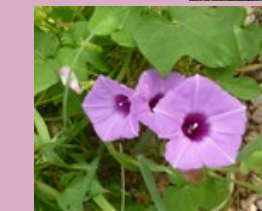
Texas Aster



Wild Petunia



Spiderwort



Purple Bindweed



Bull Thistle



Henbit



Lemon Mint



Foxglove



Prairie Verbena



Silver Leaf Nightshade



Gayfeather



Western Ironweed



Wood-Sorrel



# Edible Wild Plants

Note: Only the adult leader may pick edible plants to distribute for tasting



Prickly Pear Cactus  
Fruit & pads (leaves) edible



Turk's Cap-Summer & Fall  
Fruit and flowers edible



Clover/Oxalis-Spring & Fall  
Leaves & seed pods edible



Greenbrier-Spring & fall,  
new leaf tips edible



Dewberry-Spring  
Berries edible

# Animal Tracks and Scat

Whitetail Deer		large pellets	
Red Fox		dog like with seeds and wild things	
Raccoon		reddish cords with pieces of shells	
Cottontail Rabbit		small pellets	
Opossum		small, thin cords	
Bobcat		embedded light fur	
Coyote/Dog		dog-like with bones and wild things	

# Marine Fossils



Ammonite Unidentified

Clam

Ammonoidea

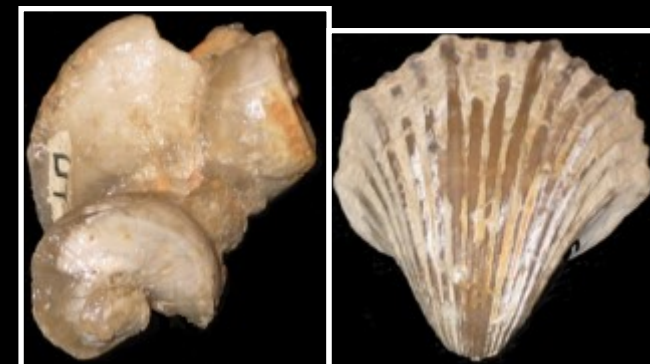
Pholadomya



Coral  
Hexacoalla

Oyster  
Lopha

Rudist  
Monopleura



Rudist  
Toucasia

Scallop  
Neithea



Snail  
Nerineoidea

Snail  
Unidentified Nerineoidea

Late Boneset

Milkweed

Heath Aster

Mexican Plum

False Garlic

Snow On The  
Prairie

Ten Petal Anemone

Rainlily

False Gaura

Texas Frog Fruit

Prickly Poppy

Frostweed