

Cities Connecting Children to Nature

City of Austin



Project Overview

The nature equity inventory for the city of Austin focused capturing **Park Data** and **Neighborhood Data** to find the largest nature gaps and the largest potential for impact. The project team developed a Likert scale for a series of factors believed to be indicators for nature and social equity.

Park Layers

City of Austin Parks

Other Jurisdictional Parks

PARD Maintained/Unowned
Properties

Pflugerville Parks

Travis County Parks

Williamson County Parks

State of Texas Parks (1)

Neighborhood Layers

Median Household Income

Child Population

Inverse Tree Canopy



Nature Factor by Park Acreage

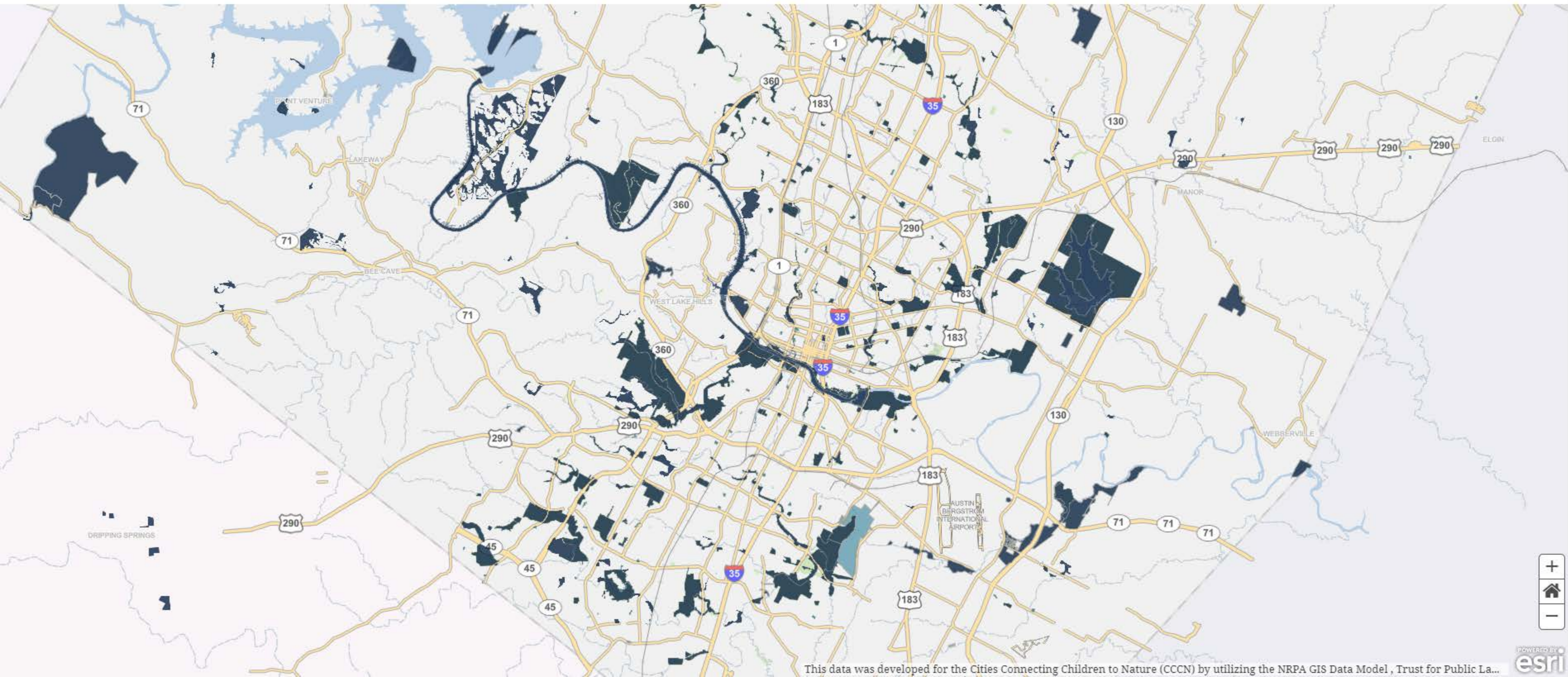
Park Acreage Rating

<1 = 1

1-2.99 = 2

3-5.99 = 3

>=6 = 4





Nature Factor by NRPA Park Status

National Recreation and Parks Association - Park Status Definitions

Closed = Park Exists but is not open to the public

Open Restricted = Park is open to the public, but access is restricted (i.e. by membership, permit, or reservation)

Open Fee = Park is open to the public, entrance fee is required

Open = Park is open to the public, free of charge

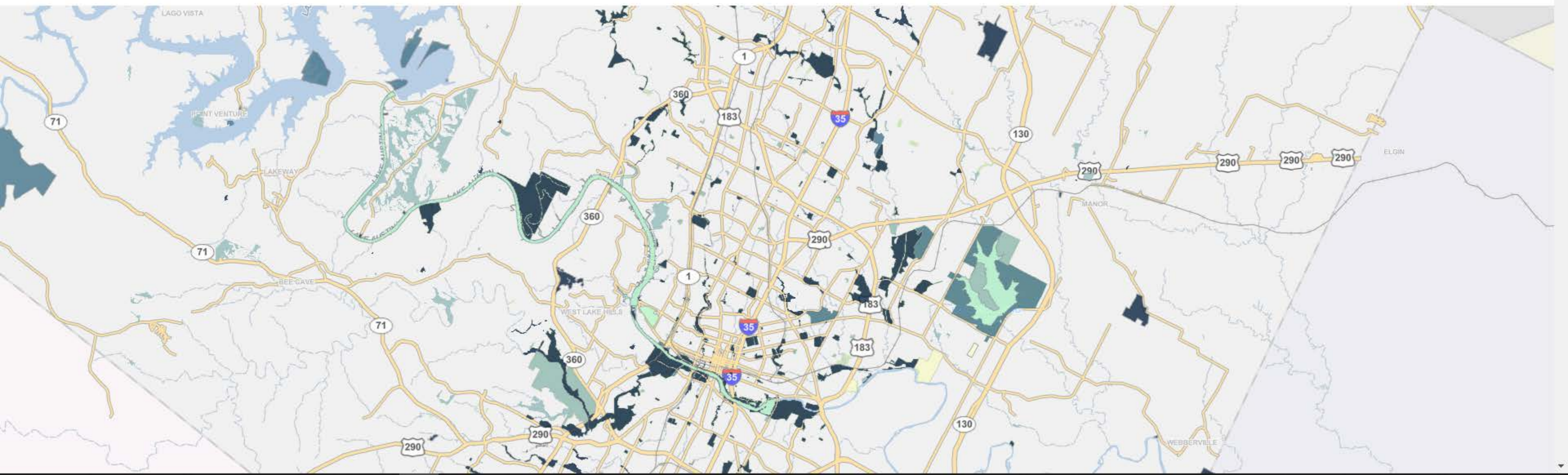
Status Rating

Closed = 0

Open Restricted = 1

Open Fee = 2

Open = 3





Nature Factor by Tree Canopy Coverage

Tree Canopy Layer Coverage Rating

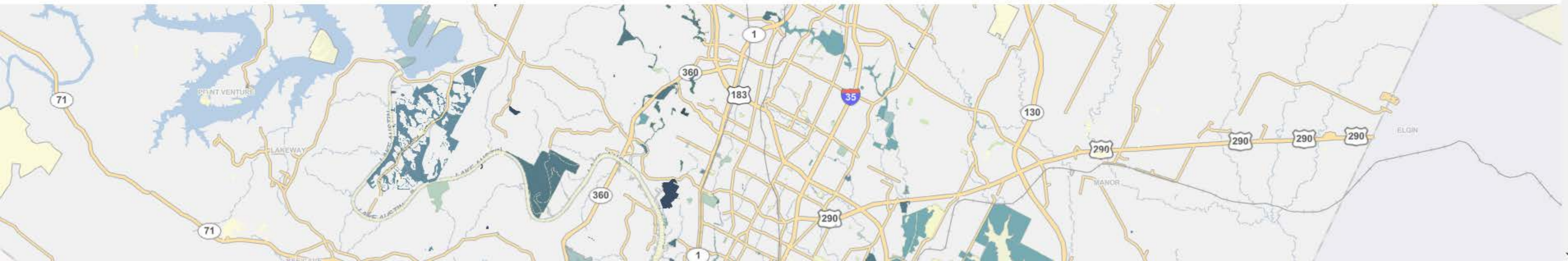
0% - 24% = 0

25% - 49% = 1

50% - 74% = 2

75% - 99% = 3

100% = 4





Nature Factor by TPL Land Use

Trust for Public Land - Land Use Definitions

Not Open to Public = Areas not yet open to public, have not been developed for public use, are not managed/patrolled, and are not legally open to public use

Water Acres = Consists of lakes, rivers, streams, bays, oceans, and wetlands, measured up to the high tide mark

Natural Lands = Pristine, or reclaimed lands that are open to the public and left unlargely undisturbed and managed for conservation and ecological value. They may have trails, but not developed for any recreation activities beyond walking, running, or cycling.

Designed Land = Parklands that have been created, constructed, planted, and managed primarily for human use

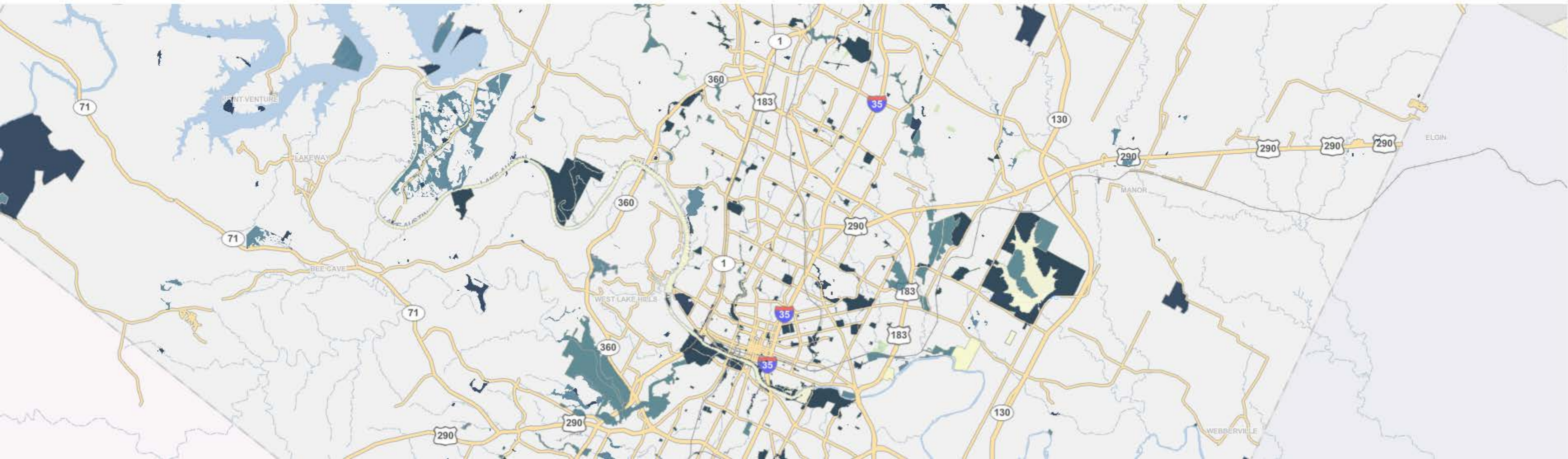
TPL Land Use Rating

Not Open to Public = 0

Water Acreage = 1

Natural Lands = 2

Designed Lands = 3





Total Nature Score for all Nature Factors

Total Nature Factor Ratings:

Park Acreage

NRPA Park Status

Tree Canopy Coverage

TPL - Land Use

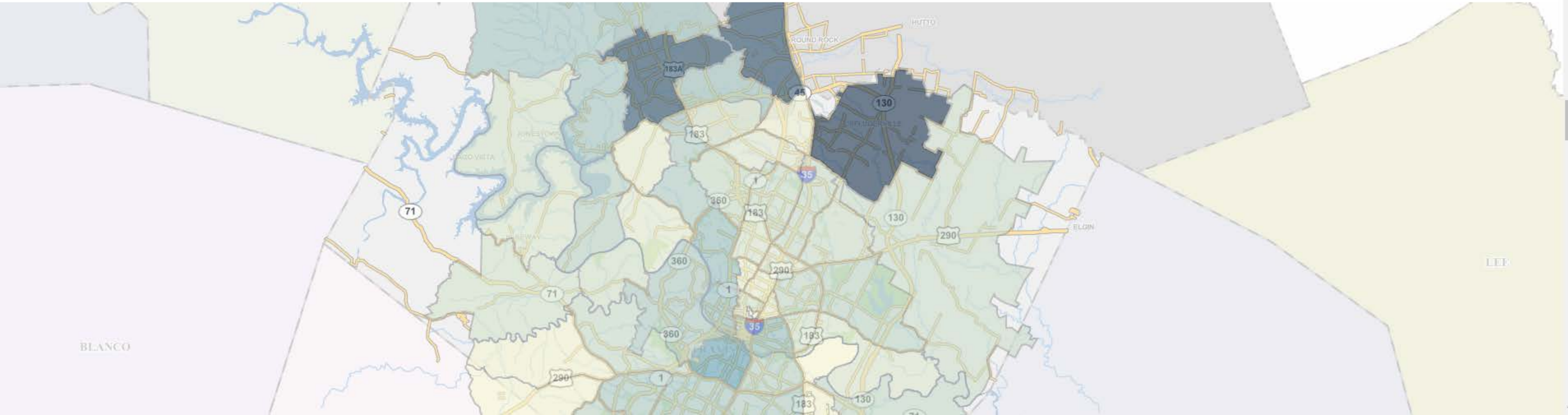




Nature Score by Zipcode

Total Nature Scores by zipcode

*Parks that exist within multiple zip codes are fully counted within all zip codes that shares the park





Median Household Income Factor by Zipcode

Median Household Income Rating

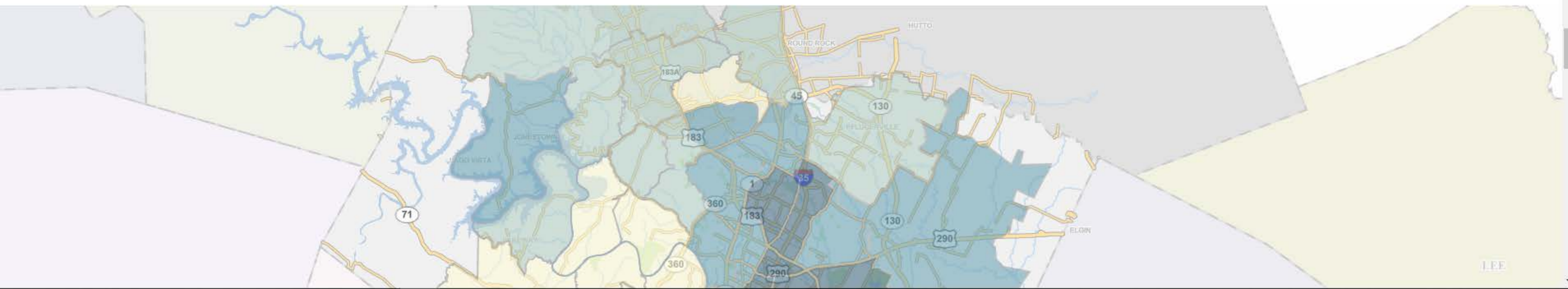
\$0 - \$24,999 = 5

\$25,000 - \$49,999 = 4

\$50,000 - \$74,999 = 3

\$75,000 - \$99,999 = 2

>\$100,000 = 1

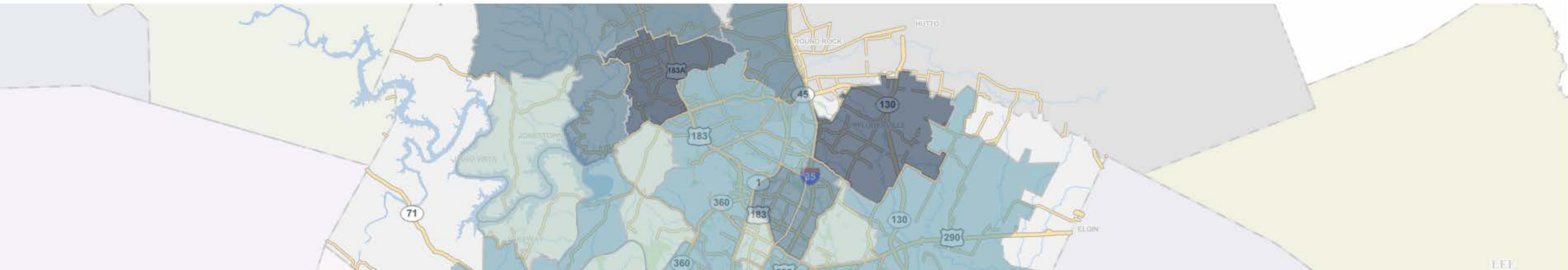




Child Population (0-19) by Zipcode

Child Population Rating

- 0 - 999 = 0
- 1,000 - 4,999 = 1
- 5,000 - 9,999 = 2
- 10,000 - 19,999 = 3
- >20,000 = 4





Inverse Tree Canopy Factor by Zipcode

Inverse Tree Canopy Factor

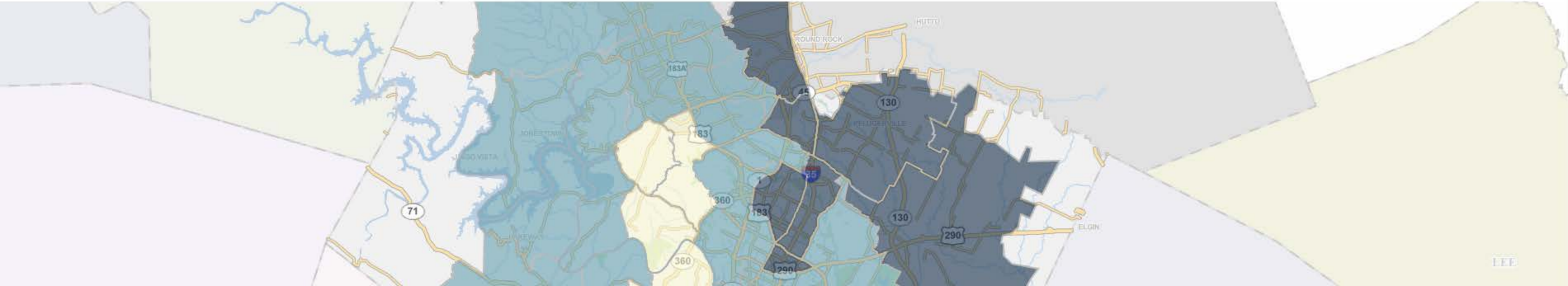
0% - 24% = 0 (all/mostly trees)

25% - 49% = 1

50% - 74% = 2

75% - 99% = 3

100% = 4 (no trees)



Potential for Impact by Zipcode

Total Neighborhood Ratings by Zipcode

Median Household Income

Child Population

Inverse Tree Canopy

