

**CIP ID#5201.008**

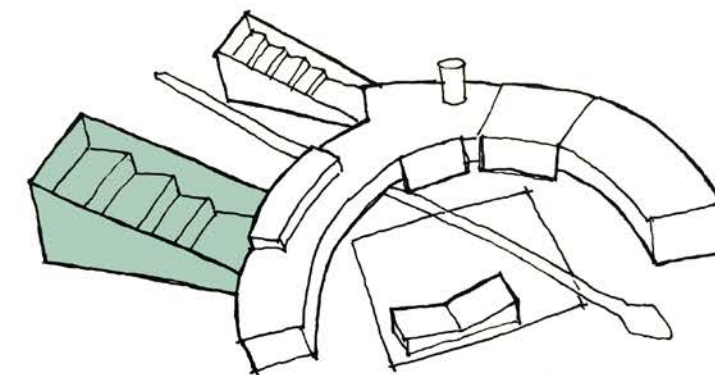
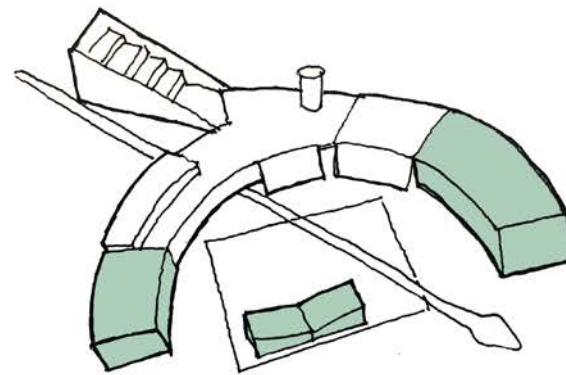
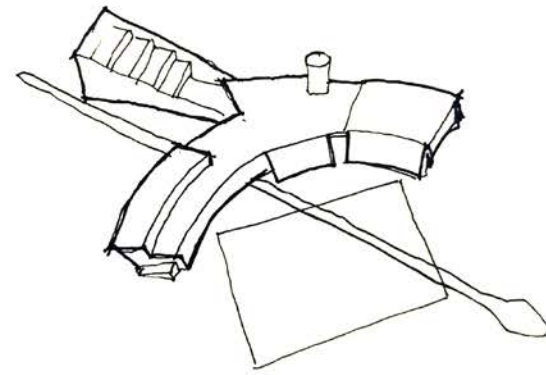
**ESB-MACC Phase 2 Improvements  
Schematic Design Presentation**

Miró Rivera-Tatiana Bilbao LLC

February 9, 2022

### MACC DEVELOPMENT

- 2000: Original Master Plan
  - 2007: Phase 1 = Completed
  - 2010: Phase 1A = Completed
  - 2018: Facilities Expansion Plan
  - 2020: Start of Phase 2**
- Teodoro González de León



Phase 1  
1998 - 2009

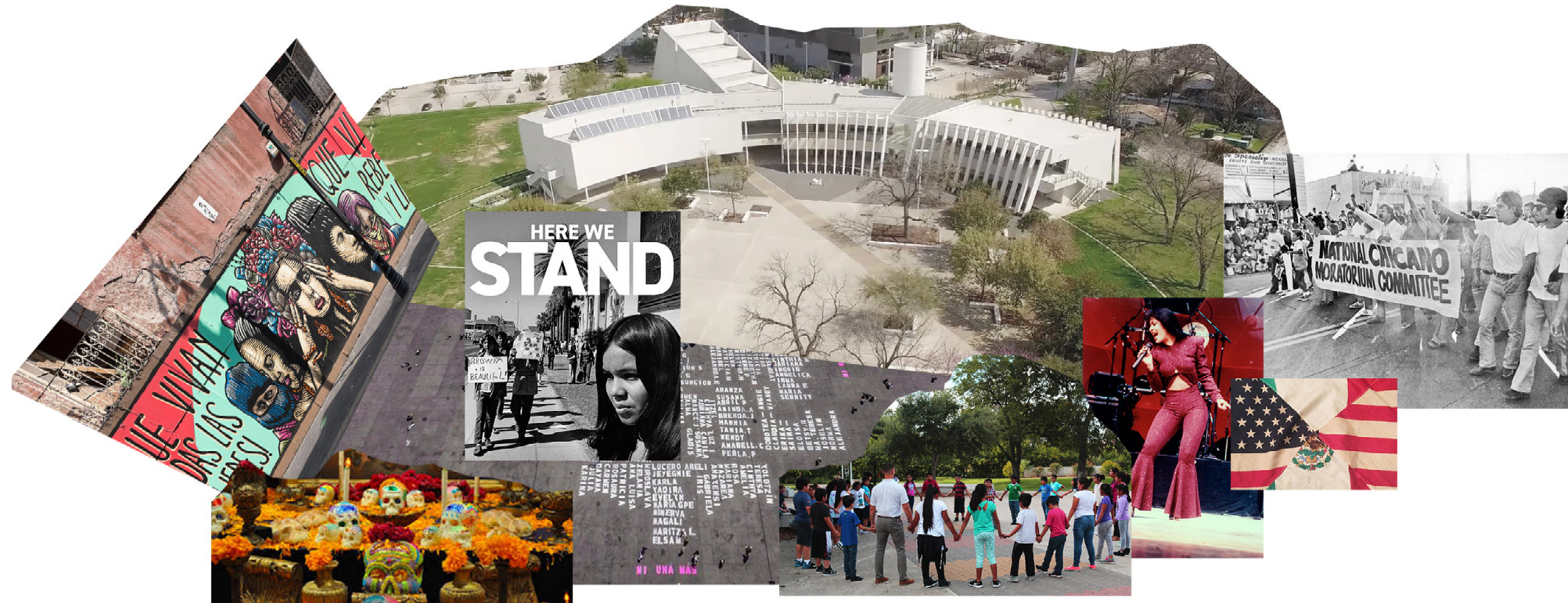
Phase 2  
2017 onwards

Phase 3  
Future



PHASE 2 - MISSION / GOALS

1. Increase visibility and presence
2. Connect to urban fabric
3. Preserve and enhance parkland
4. Elevate civic gathering space
5. Complete Teodoro's original vision



Urban Design Guidelines Goals



**Waterloo Greenway**  
Status: In-progress (2021-2026)

Waterloo Greenway is a 1.5-mile park system that encompasses 35 acres of connected green space, beginning at 15th St. and ending at the edge of Lady Bird Lake (alongside the ESB-MACC).



**Pontoon Bridge**  
Status: Feasibility

A new pontoon bridge is planned to connect the Waterloo Greenway project with South Austin. The floating bridge will provide pedestrian access across Lady Bird Lake.



**Red River St. Extension**  
Status: Feasibility

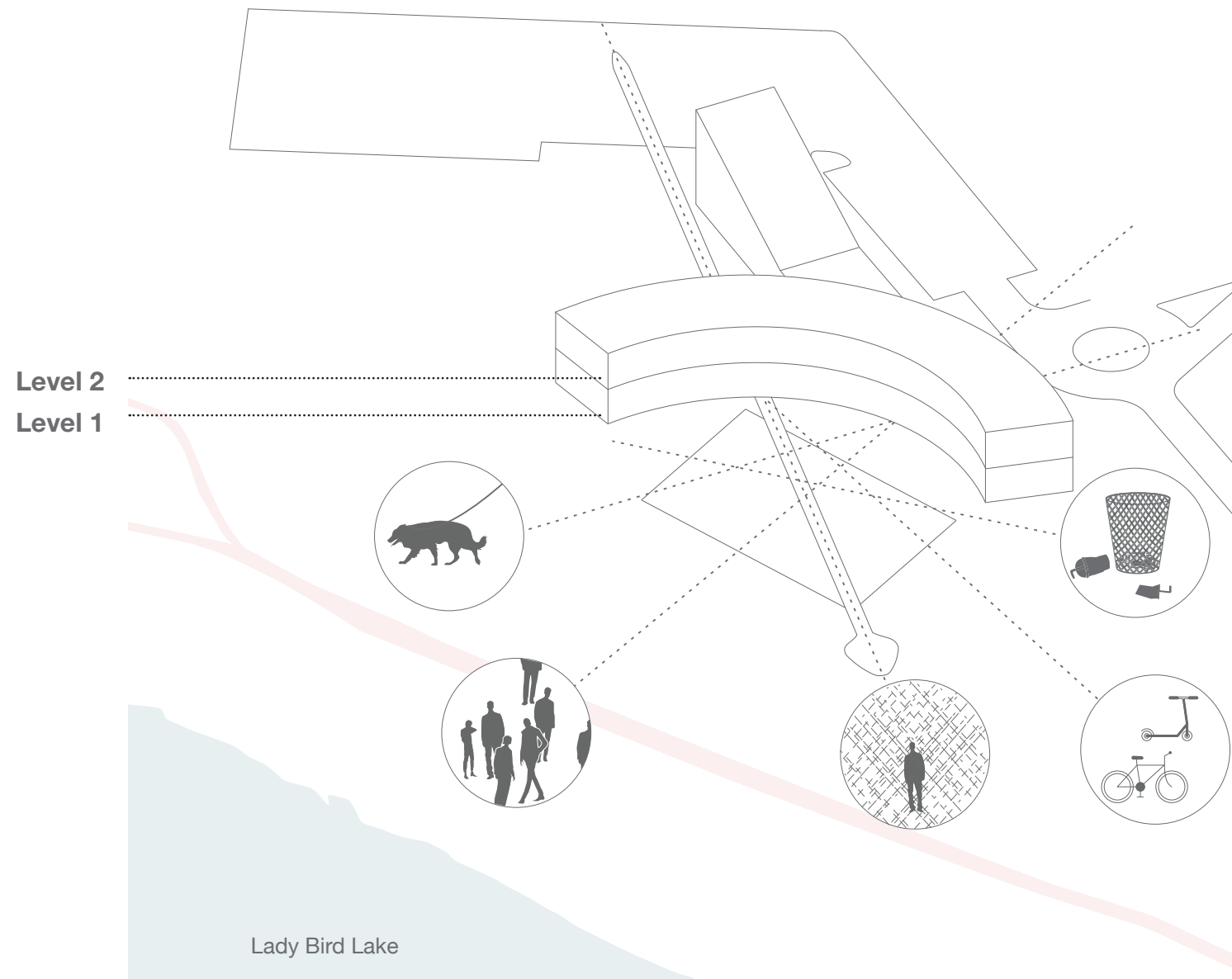
Red River Street Development is a proposal to improve the Rainey Street area, by connecting Cesar Chavez Street with the ESB-MACC. The proposal includes a new pedestrian, bicycle, and vehicle route to improve mobility in the area, and potentially a new CapMetro bus station close to the ESB-MACC campus.



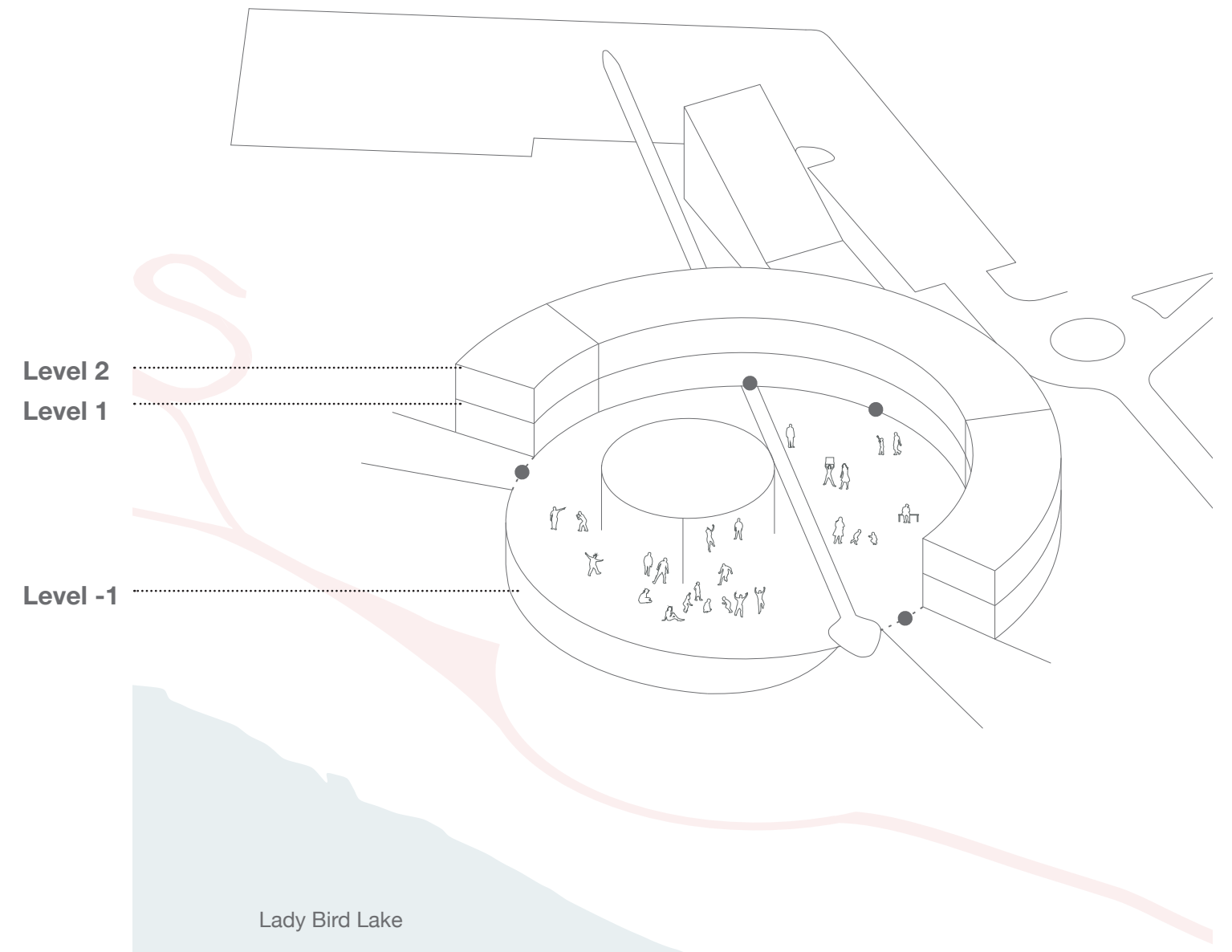
**Rainey Street Trailhead Park**  
Status: Schematic Design

Rainey Street Trailhead Park is a gateway to the riverside trails; an important entry point from Rainey Street that enhances the ecology of the area and provides new recreational uses, increasing amenities for the neighborhood and Trail users.

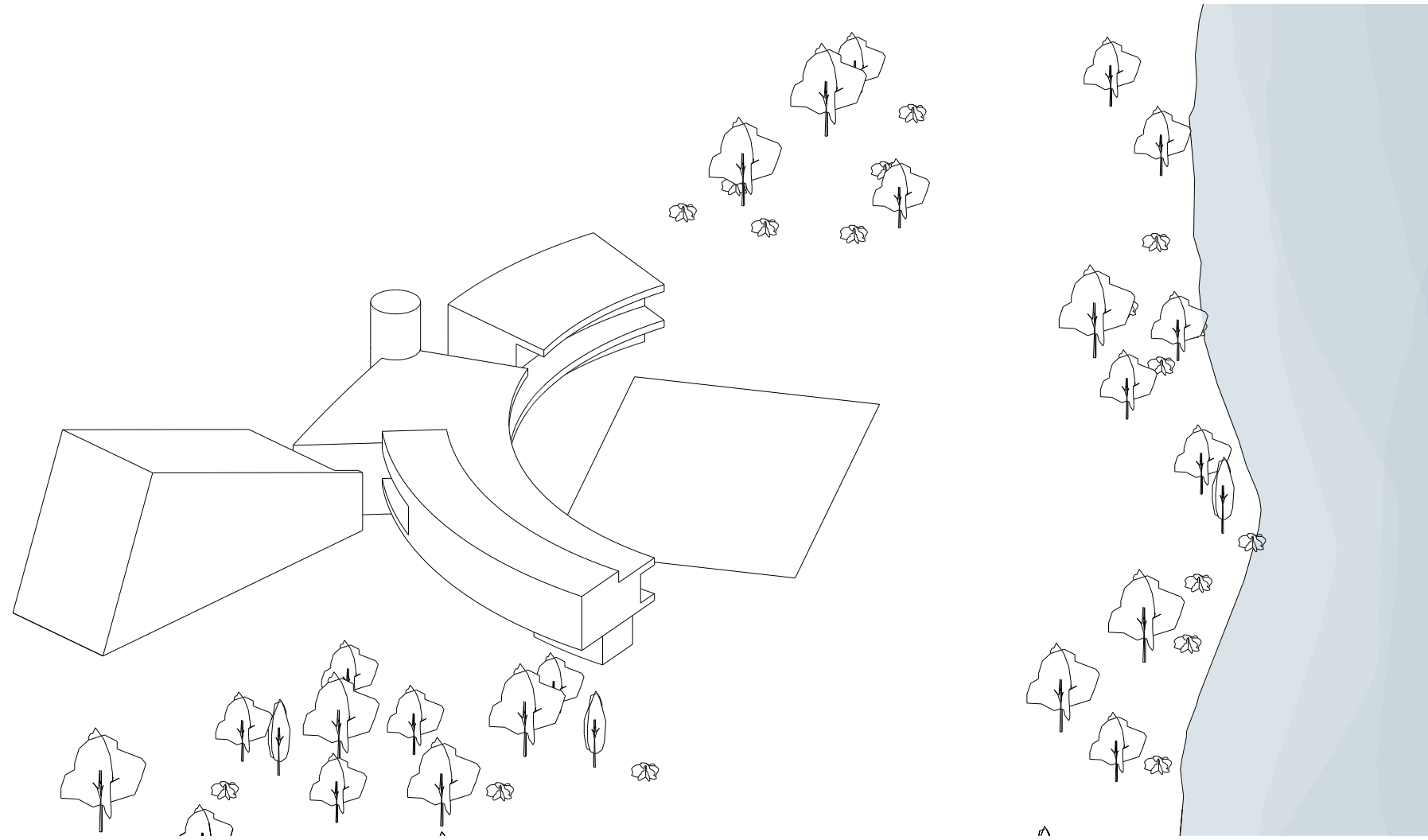




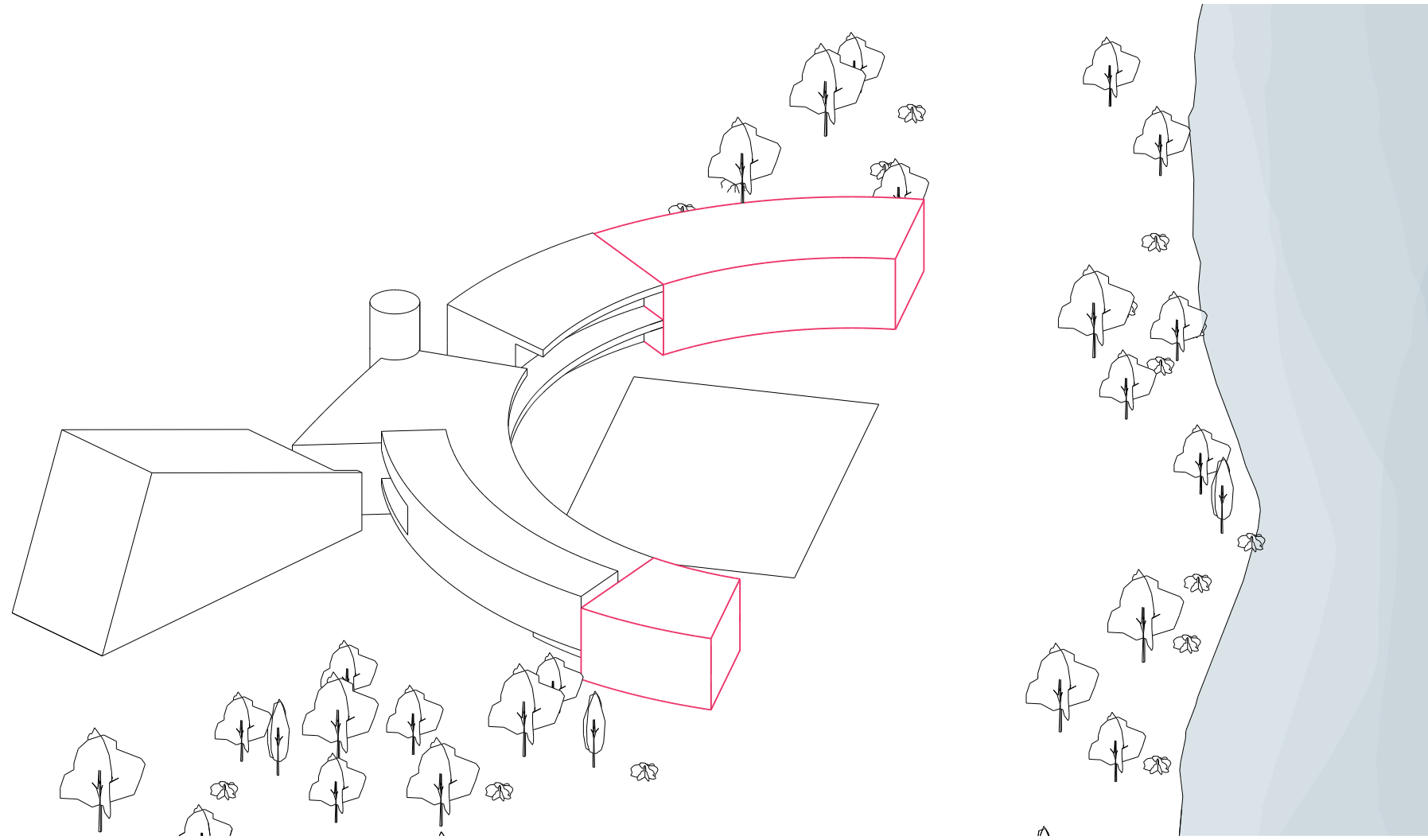
Existing condition of the ESB-MACC Plaza



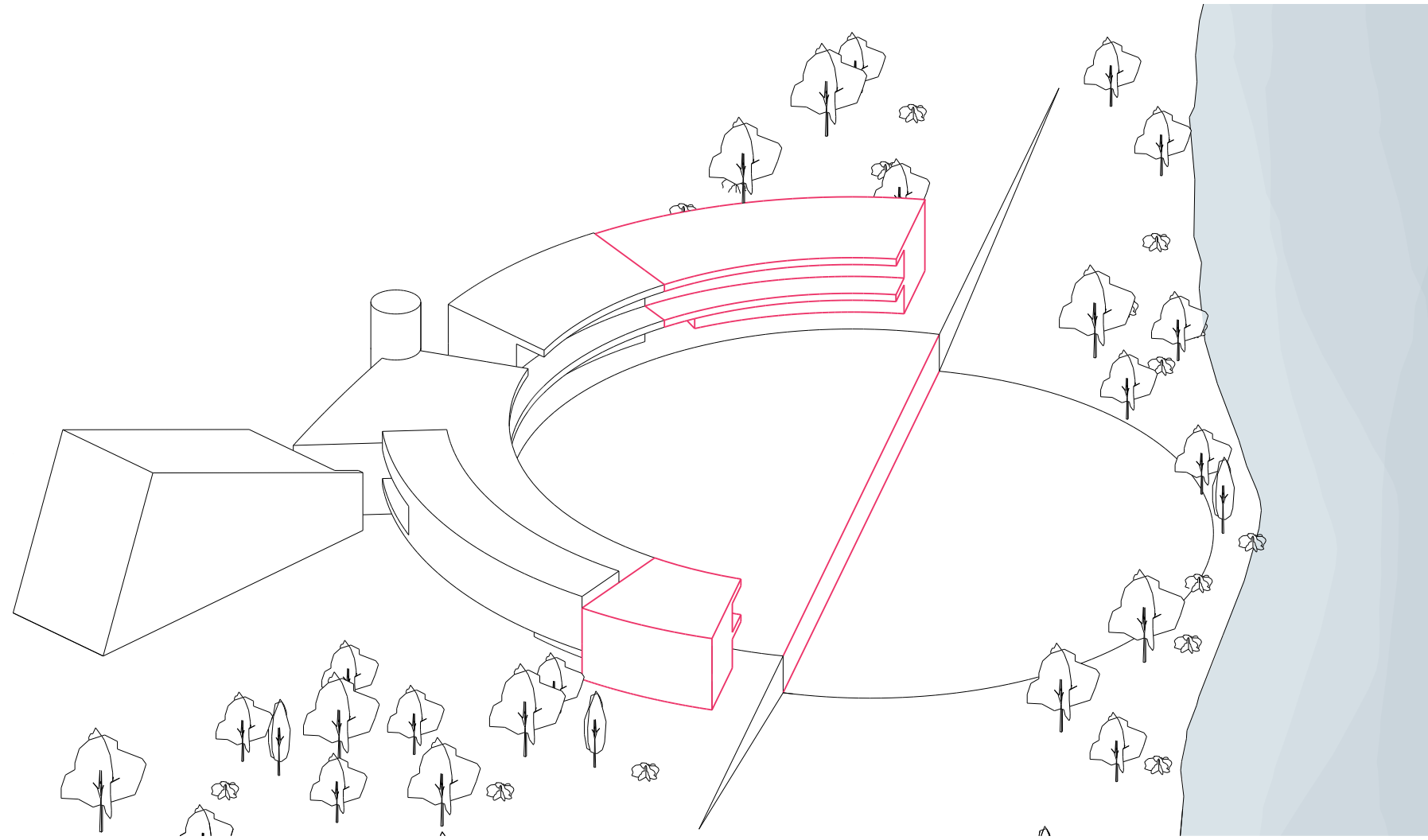
Introduction of a containing wall that limits the Zócalo



Existing Condition

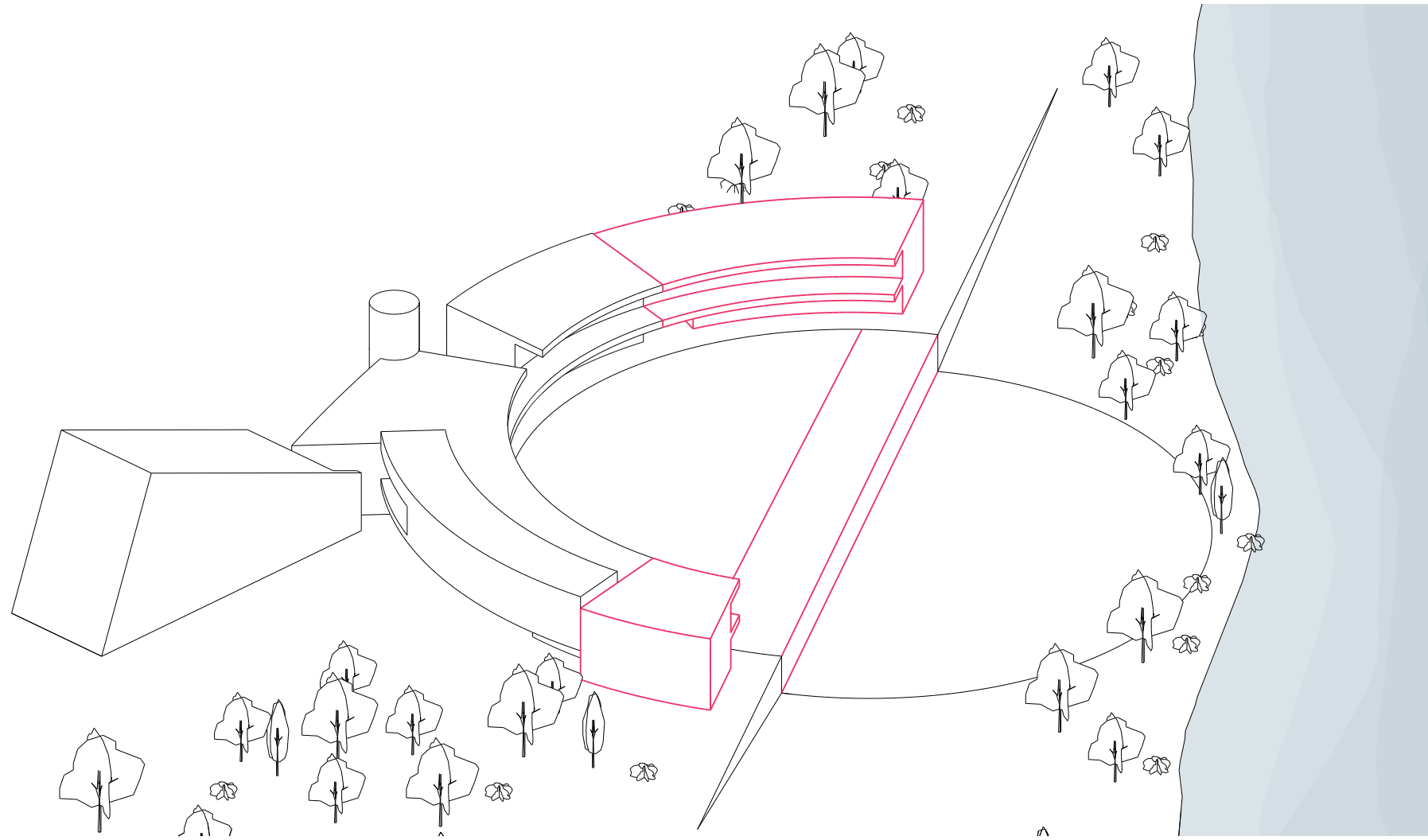


Extension of North and South wings

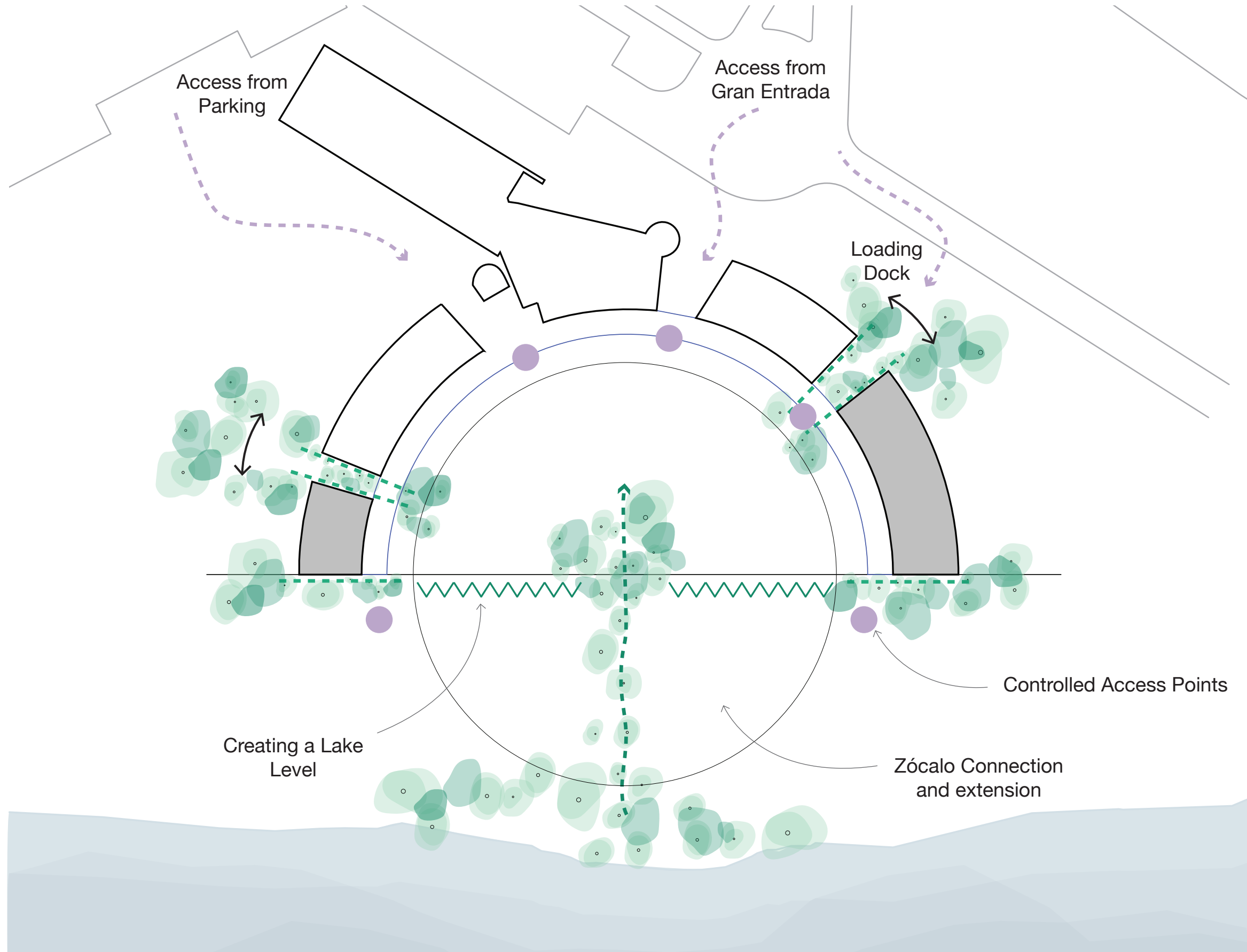


Adding a lake level will provide area to the development while securing the Zócalo

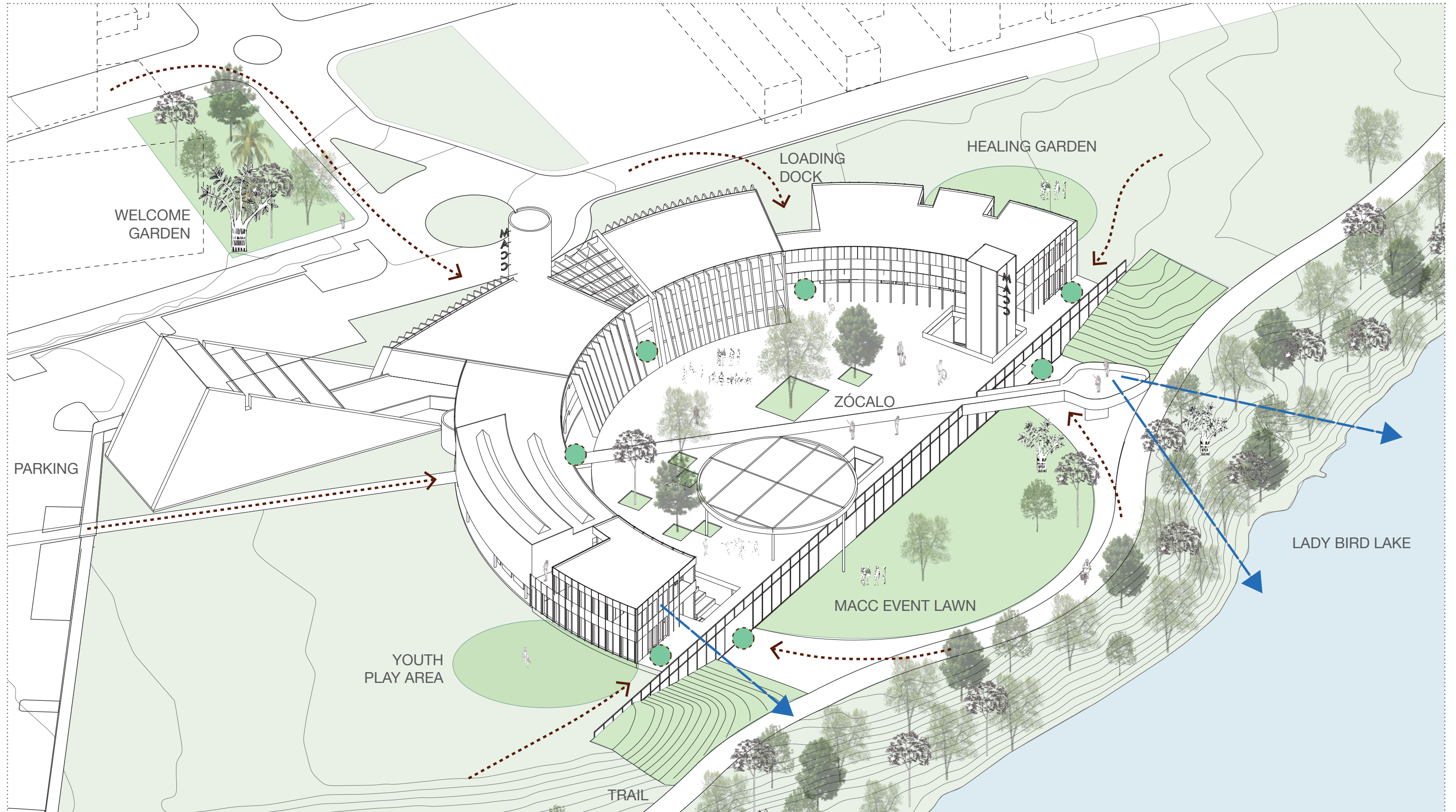




This is where we are today - new wings on the North and South and a Lake Level











**PLANTING ZONE DIAGRAM**

(SHRUBS, FORBS, GRASSES, GROUNDCOVERS)

- S RIPARIAN W/ SLOPE STABILIZATION
- P NATIVE PLANTING AREA
- L LAWN
- C CACTUS GARDEN
- R RAIN GARDEN / SWALE



**TREE DIAGRAM**

TREES (QUANTITY IS APPROXIMATE)

- TRANSPANTED TREE
- SPECIMEN TREE
- LARGE TREES
- SMALL TREES
- PALMS



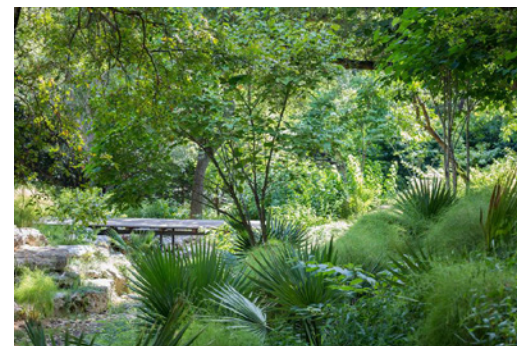
UNDERSTORY / RIPARIAN



UNDERSTORY / RIPARIAN



SLOPE / RIPARIAN



RAIN GARDEN



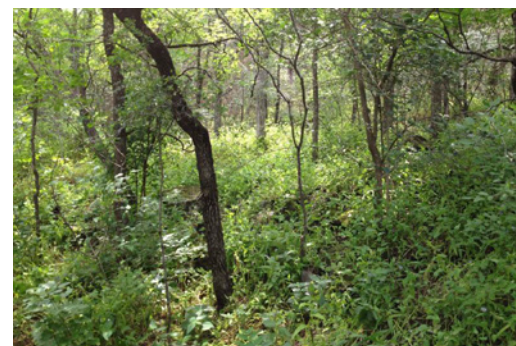
SUNNY SLOPE



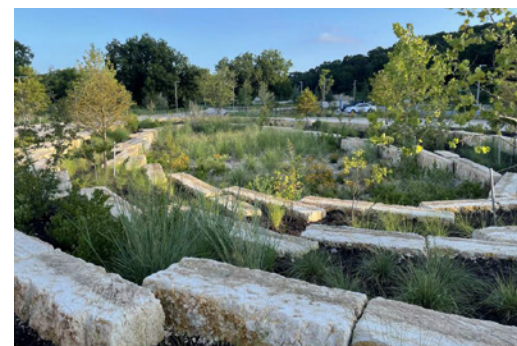
UNDERSTORY / RIPARIAN



UNDERSTORY / RIPARIAN



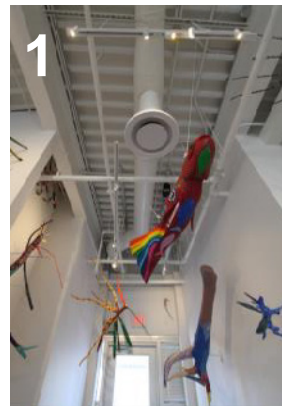
SLOPE / RIPARIAN



RAIN GARDEN

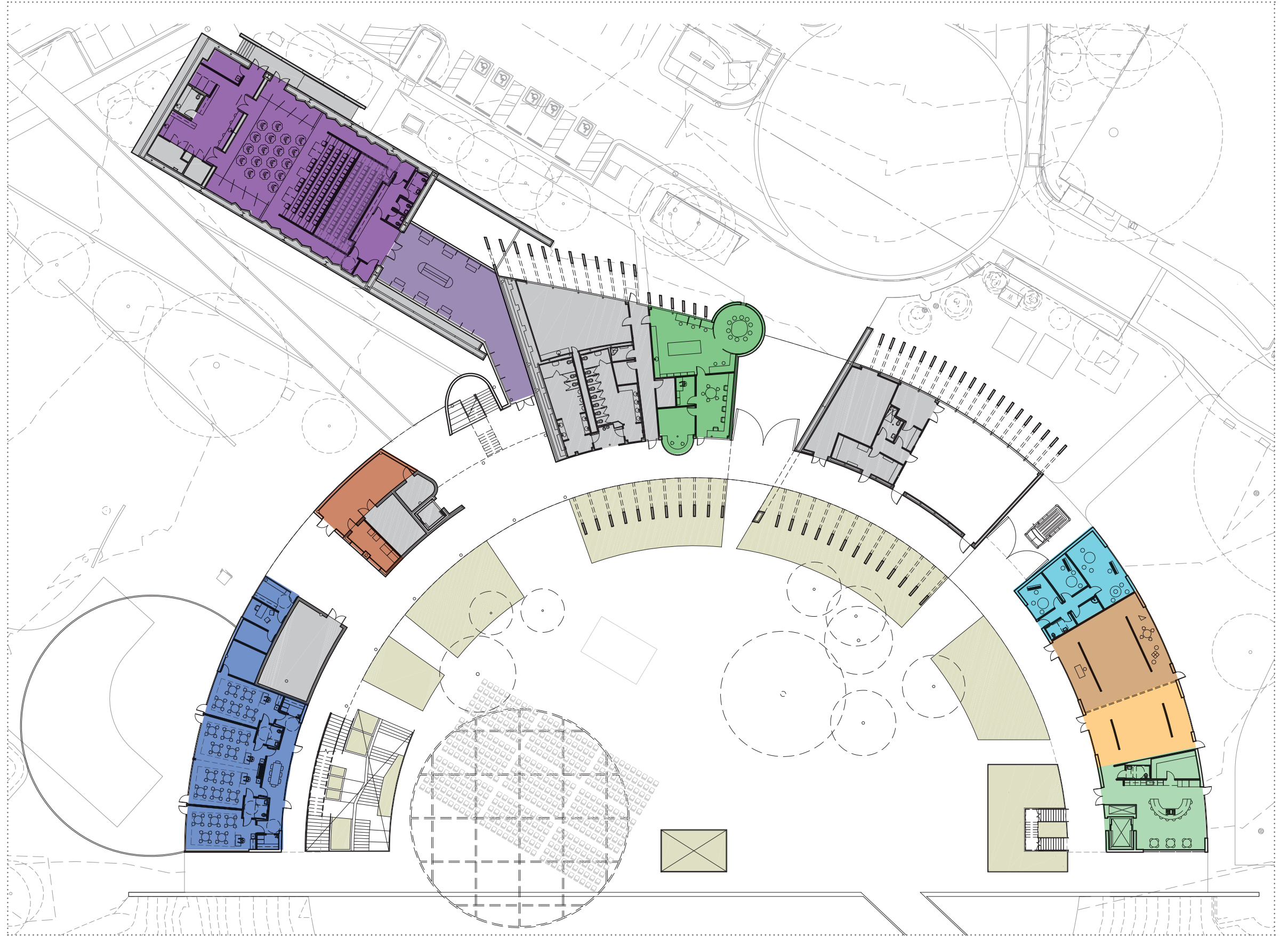


CACTUS GARDEN







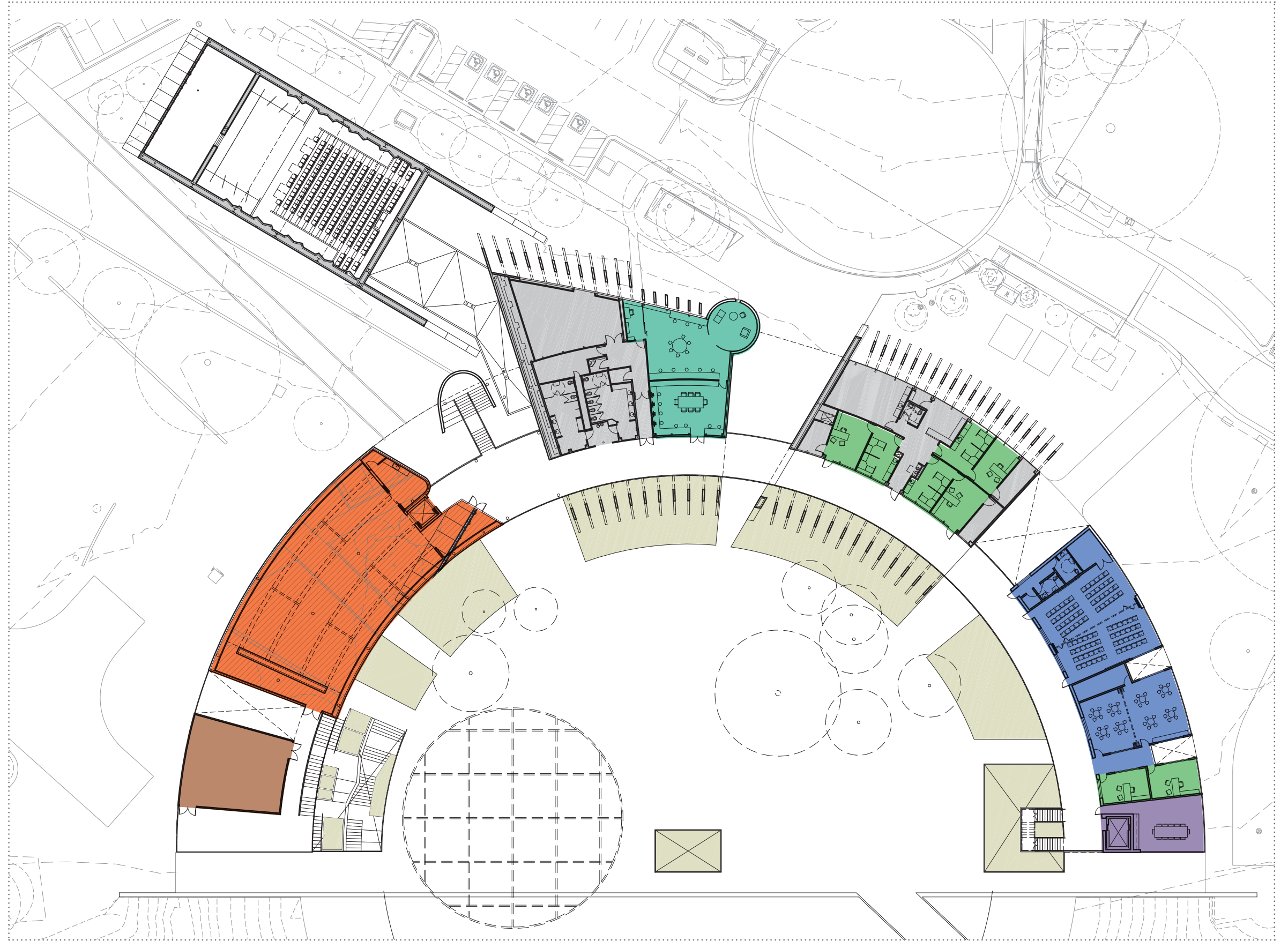


KEY PLAN








- Existing (Non-Renovated Space)
- Youth Education
- Utility / Mechanical
- Multi-use Auditorium
- Auditorium Lobby
- Reception / Visitor Information
- Dance Class
- Music Room
- Community Gallery
- Permanent Gallery
- Teaching Kitchen

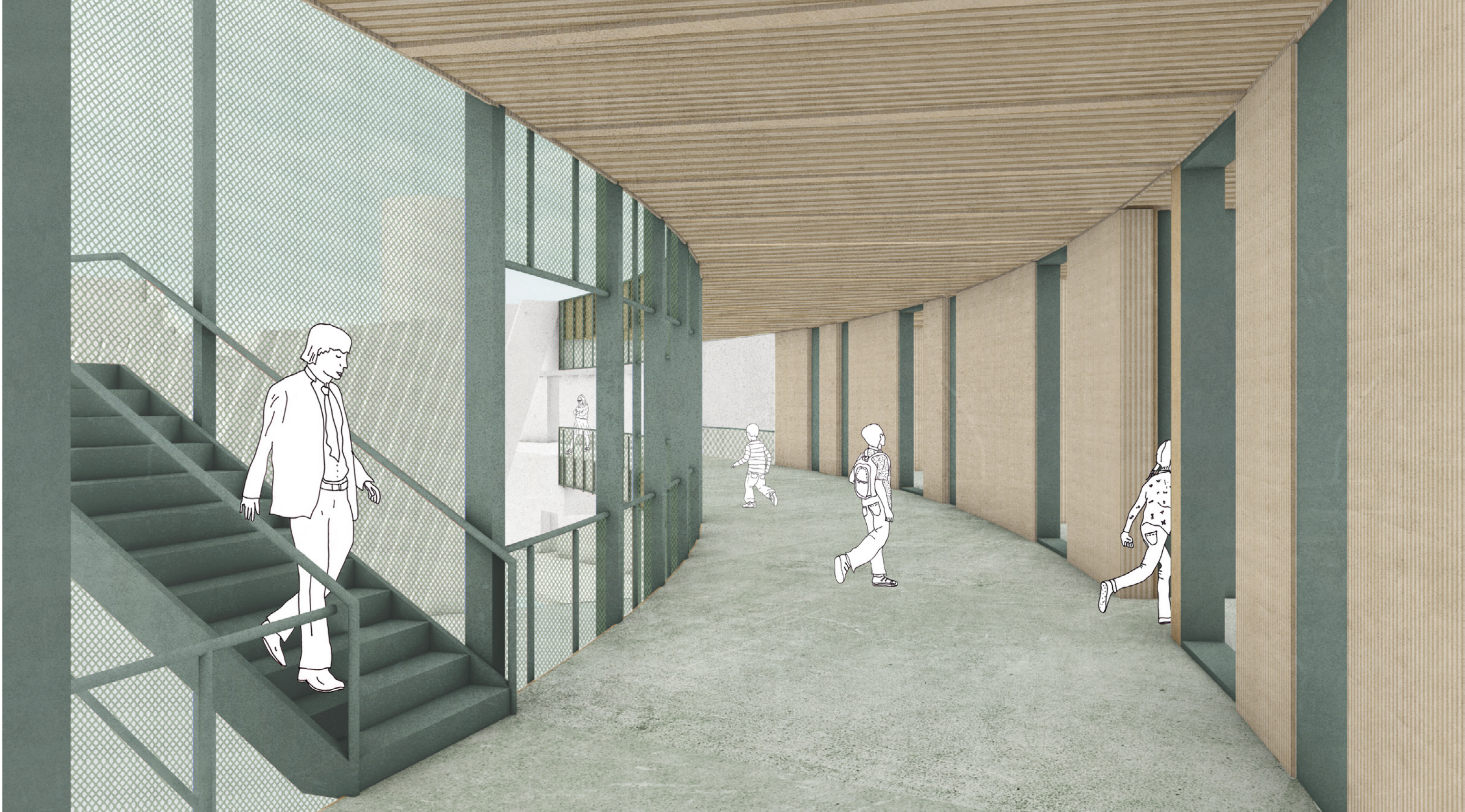
SHADE STRUCTURE: diam: 80 ft  
Fits: 450 - 500 seats under the shade structure









KEY PLAN

-  Existing (Non-Renovated Space)
-  Shell
-  Artist's Studios
-  Library / Media Center
-  Offices
-  Adult Education
-  Conference Room





KEY PLAN

-  Black Box
-  Shell
-  Permanent Gallery
-  Prep Room





Tatiana Bilbao ESTUDIO

